

# LONG BUCKBY MACHINE KNITTERS



december  
2019



## FORTHCOMING EVENTS

### CLUB MEETINGS

TODAY

**AGM/ COMPETITION, DISPLAY AND SALES/End of year celebration**



### FUTURE MEETINGS

See attached calendar for 2020.

At meetings where we do not have an outside speaker, club members are encouraged to participate. Please see Lynda if you would like to demonstrate or show a special technique or item

- Please let us know if you have a special requirement in case of emergency, e.g. a mobility problem which would mean a special arrangement in case of evacuation of the building
- Please also respect the demonstrators and other members, some of whom have hearing impairment, by not talking during the demonstrations. **\*\*PLEASE SWITCH OFF YOUR PHONE!\*\***

### CLUB NEWS



The committee would like to have feedback on current and future club meetings. We can use this to tailor the club programme to meet members' needs and interests. This can be oral, written or by email!

### OTHER EVENTS

**Lots of local craft fairs going on in December, and if you are looking for somewhere to go in the January gloom, why not try this [great venue in the middle of Oxford]**

**Until January 19<sup>th</sup> 2020**

**Kiki Smith: I am a Wanderer exhibition.** Includes tapestry weaving, and the use of punchcards to create Jacquard patterns (interactive display) as well as sculptures using lots of different natural materials.

<https://www.modernartoxford.org.uk/events/>

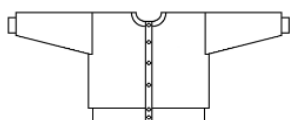
### CLUB SERVICES

#### LIBRARY

We have a comprehensive free lending library and would welcome donations of hardback machine knitting books for this purpose. See Margaret for loans.



#### PATTERNS



In addition to patterns available in this newsletter and on our website, Lynda is also willing to make bespoke patterns via Knitware for members: these will be available as printouts or pdf files. Just let Lynda know the details.

## Small Ads

### FOR SALE AND WANTED



#### FOR SALE

**Two brother machines** punch card pattern with knit leaders and ribbers with tables I would like £200 each  
Sue 07702309582

#### WANTED

PLEASE LET ME HAVE DETAILS OF ANYTHING YOU WOULD LIKE TO ADVERTISE IN THIS SPACE. SALES AND WANTED – FREE ADVERTISING!

### PUZZLES



#### WORDSEARCH

# Christmas

M	S	E	G	O	O	R	C	S	T	E	O	M	Y
T	M	V	R	C	S	A	M	T	S	I	R	H	C
J	O	A	E	I	S	S	S	F	A	G	Y	O	R
I	S	N	O	W	F	L	A	K	E	N	I	Y	T
E	C	S	R	E	K	C	A	R	C	J	G	S	S
Y	E	K	K	S	E	R	J	M	S	Y	Y	E	R
T	H	G	C	T	J	K	A	E	D	S	G	N	L
I	F	A	M	I	L	Y	C	R	N	T	R	A	K
V	T	H	J	K	E	K	K	R	E	N	I	C	E
I	S	T	F	I	G	A	F	Y	I	E	N	Y	Y
T	C	Y	L	L	O	J	R	S	R	S	C	D	K
A	E	I	A	C	Y	E	O	C	F	E	H	N	A
N	T	R	E	E	N	S	S	M	C	R	S	A	R
M	A	N	G	E	R	D	T	Y	C	P	N	C	R

JACK FROST  
ANGEL  
CHRISTMAS  
SNOWFLAKE  
GIFTS  
PRESENTS  
FAMILY  
SCROOGE  
MERRY  
NATIVITY  
MANGER  
CRACKERS  
GRINCH  
JOLLY  
FRIENDS  
TREE  
CANDY CANES

Play this puzzle online at : <http://thewordsearch.com/puzzle/124/>

## SUDOKU

	9	6		4			3	
	5	7	8	2				
1			9			5		
		9		1				8
5								2
4				9		6		
		4			3			1
				7	9	2	6	
	2			5		9	8	

### Rules of Sudoku

Some of the cells in the grid are prefilled with a number between 1 and 9, while many other cells are blank. Your job is to determine the correct number to be entered in each of the empty cells.

To figure out which number between 1 and 9 belongs in a particular cell, you need to adhere to the following rules:

- The numbers 1 through 9 must appear exactly once in each **row**.
- The numbers 1 through 9 must appear exactly once in each **column**.
- The numbers 1 through 9 must appear exactly once in each **3x3 box**.

Solution at end of newsletter.

## TODAY'S THEME

Today we have the following 'order of play'

- Arrival and payment of annual subscription
- Setting up of exhibition – please show items you have brought
- AGM [see agenda below]
- Refreshments. Voting for prizewinner. Sales
- Presentations by exhibitors
- Award ceremony

## ANNUAL GENERAL MEETING

### AGENDA

1. Welcome to members: N.B. membership subs due today!
2. Chairman's report
3. Treasurer's report
4. Membership secretary's report
5. Next year's programme
6. Any other business

## SUPPLIES DIRECTORY

[in no particular order, and not necessarily endorsed by LBMK!]

### MACHINE KNITTING YARN [FAIRLY LOCAL]

Yeoman Yarns: <https://yeoman-yarns.co.uk> primarily a mail/internet order business for hand and machine knitting yarns, but with a small shop in their Leicester warehouse available.

Uppingham Yarns: <https://www.wools.co.uk/index.php> hand and machine knitting yarns, spinning and weaving supplies too

Bedford Sewing and Knitting: <https://www.bsk.co.uk> mainly sewing now, but still some machine knitting yarn and spares

---

### FURTHER AFIELD:

Fairfield Yarns: [Heywood, Lancs] <http://www.fairfielddyarns.co.uk/> mainly machine knitting yarn, some equipment

Airedale Yarns [Keighley, Yorks] <https://airedaleyarns.co.uk/index.php/> mainly machine knitting yarn

### OTHER FAIRLY LOCAL YARN SHOPS

Get Knitting [Northampton] <https://www.yarnshopnorthampton.co.uk/>

Toft <https://www.toftuk.com/> Alpaca farm/ shop in Dunchurch near Rugby

Wool Warehouse [Leamington Spa] <https://www.woolwarehouse.co.uk/> mainly postal/online, but with a small shop on site

Bella Knit [Corby] <http://www.bellaknit.co.uk/>

Janknits [Wellingborough] <http://www.janknits.co.uk/contact%20us%20.html>

Jools Wools [Finedon] <http://joolswools.co.uk/>

The Wool Shop [Newport Pagnell] <http://www.the-wool-shop.com/>

Knit One [Leicester] <http://www.knitone.uk.com/>

The Knitting Company [Leicester] <https://www.facebook.com/knittingcompany>

### MACHINE KNITTING PATTERNS

Ann Lavene <http://home-machine-knitting.co.uk/about-anne/>

Marianne Henio <http://heniocreative.com>

### REPAIRS AND SERVICE

Richard Jones (ex Brother engineer).Tel: 01386 833339 (after 6pm)Mobile: 07818 033563

Email: [richardjones47@btinternet.com](mailto:richardjones47@btinternet.com) Knitting and sewing machine repairs.

SILVER [Rushden] <http://www.silverviscount.co.uk>

## OTHER CLUBS

Leicestershire Machine Knitters <http://www.leicestershiremk.org.uk>

Sherborne <http://www.allknitsherberts.co.uk>

Bookham <http://www.bookhamknitclub.org.uk>

Berkshire <http://www.berkshiremachineknittingclub.co.uk>

Yateley <http://yateleymkclub.blogspot.com/>

Fleet <http://fleetknittingclub.blogspot.com/>

Lichfield <https://www.lichfieldmachineknitting.co.uk>

2	9	6	1	4	5	8	3	7
3	5	7	8	2	6	1	4	9
1	4	8	9	3	7	5	2	6
6	3	9	5	1	2	4	7	8
5	8	1	7	6	4	3	9	2
4	7	2	3	9	8	6	1	5
9	6	4	2	8	3	7	5	1
8	1	5	4	7	9	2	6	3
7	2	3	6	5	1	9	8	4