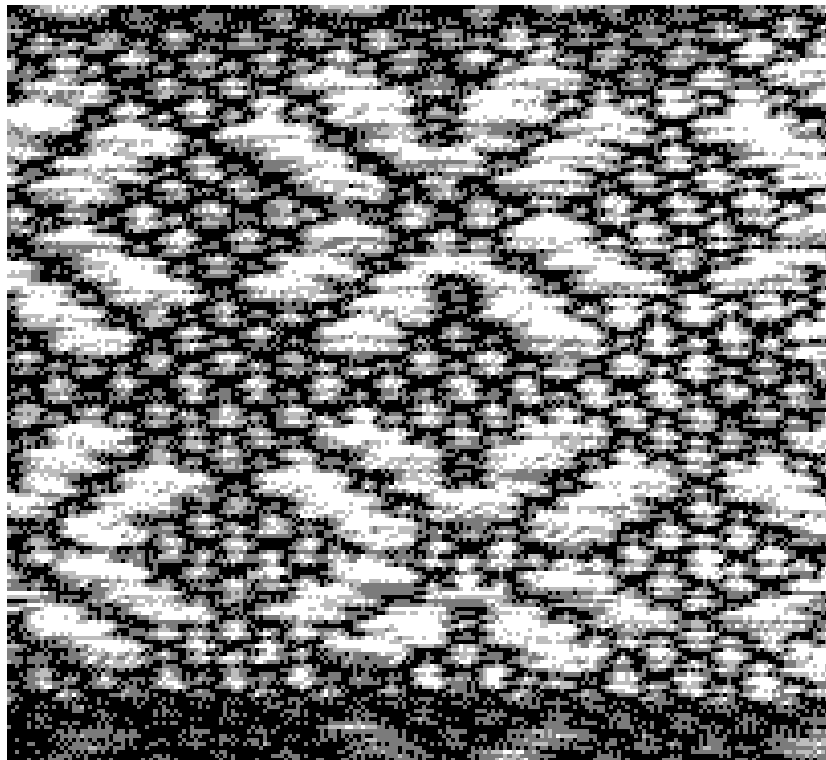


LONG BUCKBY MACHINE KNITTERS

N E W S

F E B R U A R Y

2 0 1 9



FORTHCOMING EVENTS

CLUB MEETINGS

TODAY

11th Feb PLATING AND WEAVING

FUTURE MEETINGS

11th March BAGS [all crafts]

8th April Anne Lavene [this meeting will be in the big hall next to our normal meeting room, and the doors will be open from 12.30, to allow visitors to bring their lunch beforehand. The meeting will start at 2 as usual.]

13th May SOFT FURNISHING

10th June ERICA THOMSON - TASSELS

8th July GENERAL CRAFTS

12th Aug OPEN MEETING

9th Sept ACCESSORIES

14th Oct SUE BOOTH: SHOULDERS

11th Nov BASIC MAINTENANCE

9th Dec AGM/ COMPETITION, DISPLAY AND SALES/End of year celebration

At meetings where we do not have an outside speaker, club members are encouraged to participate: please see Lynda if you would like to demonstrate or show a special technique or item

- Please let us know if you have a special requirement in case of emergency, e.g. a mobility problem which would mean a special arrangement in case of evacuation of the building
- Please also respect the demonstrators and other members, some of whom have hearing impairment, by not talking during the demonstrations. ****PLEASE SWITCH OFF YOUR PHONE!****

WORKSHOPS

ALL WORKSHOPS RUN FROM 1-4 [ARRIVE FROM 12.30, BRING YOUR LUNCH IF YOU WISH] AT LONG BUCKBY COMMUNITY CENTRE. COST £15 TO INCLUDE USE OF EQUIPMENT. THE MAIN FOCUS OF THE WORKSHOPS IS AS BELOW, BUT ALTERNATIVELY, AS EVER, JOIN OUR WORKSHOPS TO PRACTISE OR LEARN ANOTHER SKILL OF YOUR CHOICE [BUT DO DISCUSS THIS WITH US FIRST!] TEA AND COFFEE PROVIDED. MACHINES ALSO PROVIDED, LET US KNOW WHICH MACHINE YOU PREFER, SO WE CAN MAKE IT AVAILABLE.



15th April BEGINNERS WORKSHOP fabric

16th Sept BEGINNERS WORKSHOP: shaping

CLUB NEWS

April meeting will have slightly different arrangements [see above].

Following conversations at last month's meeting, the open meeting in August may now feature a 'show and tell' session, for which we would really love to have a variety of projects: we are thinking of pre-booked slots for members to talk about their work for 5-10 minutes each. Also for that open meeting, it was proposed to use some time to discuss yarns and suppliers: again, we would welcome input from all members and friends.

OTHER EVENTS

28th February-3rd March 2019: The Knitting & Stitching Show, Olympia

www.theknittingandstitchingshow.com

14th-17th March 2019: Sewing for Pleasure, NEC, Birmingham www.ichfevents.co.uk/events/sewing-fashion

4th-6th April 2019: The Creative Craft Show, Excel, London www.stitchandhobby.co.uk/london/spring

14th April 2019 : Nottingham All Knitting Show: West Park Leisure Centre in Wilsthorpe Road, Long Eaton NG10 4AA: 10 - 4

CLUB SERVICES

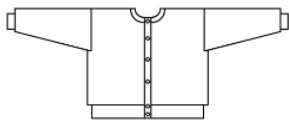
EQUIPMENT HIRE

We have a comprehensive list of equipment available for loan, including full machines as well as accessories. See Margaret for details.

We are also setting up a free lending library and would welcome donations of hardback machine knitting books for this purpose.



PATTERNS



In addition to patterns available in this newsletter and on our website, Lynda is also willing to make bespoke patterns via Knitware for members: these will be available as printouts or pdf files. Form attached for orders, or just let Lynda know the details.

Small Ads

BUSINESS ADS

❖ Knits 'n' Bits [Long Buckby]

We buy and sell used [serviced] knitting machines and accessories, and also sell books, punchcards, spares and more. Contact Wendy on 01327-842335 or email knitsnbits@live.co.uk.

Elsie's Wool Shop: Ma's Buttons in Victoria Road, Rushden, just off the high street. They supply wool, all plies, including cones and a large selection of buttons and haberdashery items. <https://www.masbuttons.co.uk/>

FOR SALE AND WANTED

FOR SALE

Two brother machines punch card pattern with knit leaders and ribbers with tables I would like £200 each

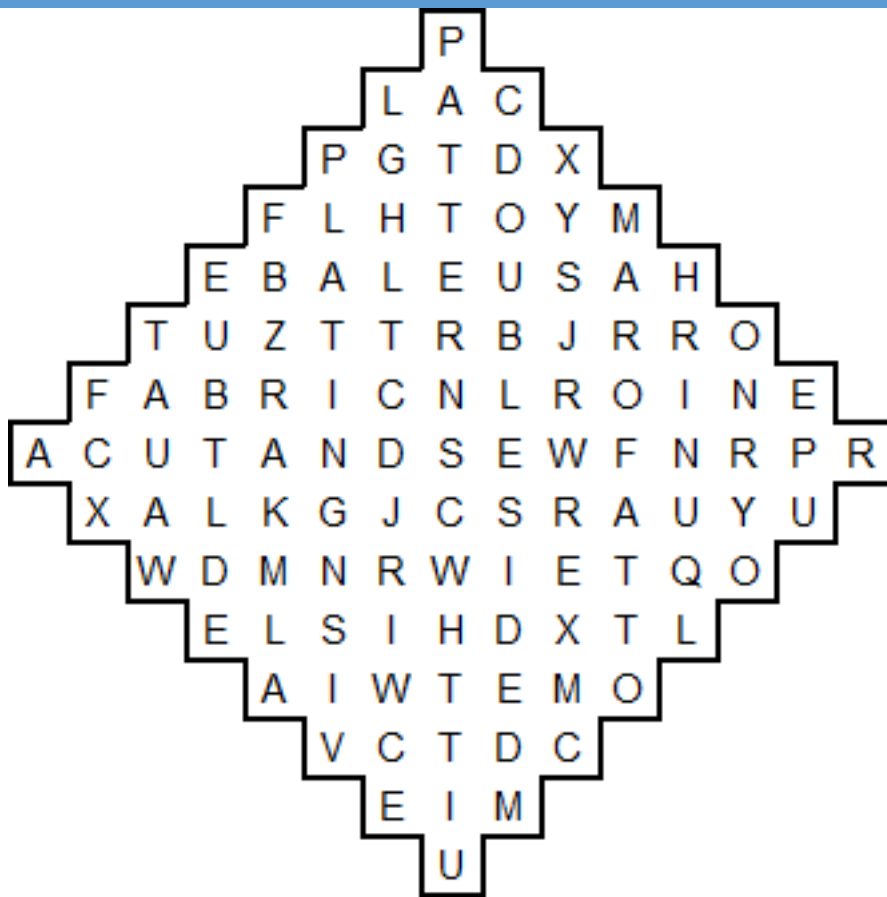
Sue 07702309582

WANTED

I'm looking for a Passap E6000 + motor Paolo Preite preite@hotmail.fr [in France]

PLEASE LET ME HAVE DETAILS OF ANYTHING YOU WOULD LIKE TO ADVERTISE IN THIS SPACE. SALES AND WANTED – FREE ADVERTISING!

PUZZLES



WORDSEARCH

colour
cutandsew
doublesided
fabric
knit
pattern
plating
texture
weave
yarn

TODAY'S THEME

PLATING

Pat and Lynda will show how to set up Knitmaster/Silver and Brother machines respectively for single bed plating. Plating is great for:

- Combining yarns: e.g. two thin yarns of different shades. Two 2 ply yarns could be treated like 4 ply, for example.
- Adding texture: plated tuck stitch will give texture and touches of contrast colour, to create a stunning effect.
- Double sided fabric: if a garment has parts where the 'wrong' side shows, this can be used to good effect.
- Making it possible to wear rougher yarns e.g. by plating a softer yarn in sensitive areas like collars and cuffs



Link to short description of plating

<https://www.ravelry.com/projects/estherkate/machine-knitting---stitch-structures---plating>

And a link to a pattern for plated tuck cushion covers on our website, as shown on the left

http://www.longbuckbymk.com/index.php?option=com_content&view=article&id=112:plated-tuck-cushion&catid=51&Itemid=114

KNIT WEAVE

We will also show some uses of knitweave on either type of machine.

Like plating, knitweave can help to combine yarns, usually a fine base yarn with a thicker weaving yarn. This will produce a different texture and feel to your knitted fabric, and is more stable, and therefore can more easily be used for cut and sew.

Two YouTube videos to show the basic technique

Singer[Knitmaster]

<https://youtu.be/m7y-JWH1rxs>

and showing the Knitmaster weaving arm

<https://youtu.be/SvaEgJgBc3g>

Brother

<https://youtu.be/40N5IT0TW5c>

The following pattern uses knitweave to create texture in a cowl and a fringe!

PATTERN

This is recycled pattern from the website, for those of you who are relatively new members/friends. Quick and easy to knit!



Fringed Cowl

From an idea/pattern by [Kriskrafter](#) [Stringy Cowl]. Hers is made using a garter carriage, I have used Knitweave.

Standard gauge, tension 3.

Knitting yarn: fine, 2/30s – I used 1 ply superwash wool

Weaving yarn: textured fine e.g. 2 ply weight – I used boucle

[Or experiment!]

Punch card or stitch pattern. I used card 1.

Cast on with waste yarn over stitches 30L/30R and knit a few rows to hang weights.

Change to main knitting yarn. Knit 2 rows, setting machine to read pattern on 2nd row

Use weaving brushes.

Knit using Knitweave function to weave in textured yarn. While doing this, you can create the fringe automatically in three ways, depending on whether you want both yarns in the fringe, or just one. Choose one of these:

1. As you weave in the yarn, wrap the weaving yarn round the machine brackets at each end. I did this but used a peg on the bracket [as I had the ribber attached]. You will need to take the yarn off every 20 rows or so, as the knitting grows.
2. Put needles 50L and 50R into working position. As you work you will have a gap between your knitting and one stitch at this position. You can either
 - a. Bring the weaving yarn out to this stitch and work it in
 - b. Keep the weaving yarn on the main knitting only

When you have knitted 250 rows or so [I knitted 270, which hangs quite low] cancel the stitch pattern and hang the cast on edge on the needles to create your cowl, before casting off loosely.

Finish by cutting the loops or cutting the spare stitch on the fringes.

INTERESTING IDEAS

A neck light from Marianne Henio at <http://heniocreative.com/product/neck-lights/> really helped me with sewing up this month. It is a flexible two headed snake, which can hang from your neck, stand up on its own and deliver three kinds of light by a toggle switch on each end. I particularly liked the LED bright light, because it seemed to be almost daylight in quality, and I could see the colours clearly, even in the darkness of evening.



Currently £11.99 with free shipping.

More light – IKEA do a usb light JANSJÖ for £2,

<https://www.ikea.com/gb/en/products/lighting/work-lamps/jansi%C3%B6-led-usb-lamp-black-art-70291232/>



which I have also bought. This one attaches to any device with a usb port: I use a portable mobile phone battery charger, which works well as a temporary base and power source.

ANSWERS TO PUZZLES

