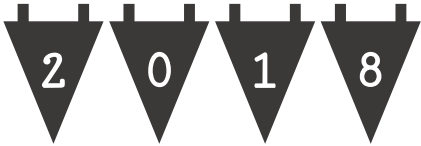


LONG BUCKBY MACHINE KNITTERS



FORTHCOMING EVENTS

CLUB MEETINGS

Today

12th March **BILL KING**

COMING UP:

9th April **NECKLINES**
14th May **LACE stitch technology**
11th June **SEWING MACHINE TECHNIQUES FOR MACHINE KNITTERS – Erica Thomson**
9th July **MACHINE KNITTING AND OTHER CRAFTS**
13th August **COLOUR AND DESIGN**
10th September **STITCH PATTERN TECHNOLOGY**

- At meetings where we do not have an outside speaker, club members are encouraged to participate: please see Lynda if you would like to demonstrate or show a special technique or item
- Please let us know if you have a special requirement in case of emergency, e.g. a mobility problem which would mean a special arrangement in case of evacuation of the building
- Please also respect the demonstrators and other members, some of whom have hearing impairment, by not talking during the demonstrations. ****PLEASE SWITCH OFF YOUR PHONE!****

WORKSHOPS



ALL WORKSHOPS RUN FROM 1-4 AT LONG BUCKBY COMMUNITY CENTRE. COST £15 TO INCLUDE USE OF EQUIPMENT.

16th April **BEGINNERS' NECKLINES/ book by March meeting**
16th July **ADAPTING PATTERNS/book by June meeting**
17th Sept **ONE PUNCHCARD, MANY PATTERNS/ book by August meeting**

OTHER EVENTS

15th-18th March 2018: Creative Craft Show, Birmingham, NEC www.ichfevents.co.uk

OPEN 09.30-17.30 (16.30 SUN)

The Creative Craft Show is a haven for knitting, cross stitch, paper crafting, jewellery & dressmaking and stitching enthusiasts, offering all the very latest supplies, ideas and innovations in the hobby world! You'll find everything from kits, charts and patterns to fabrics, yarns, threads and buttons plus opportunities to glean advice from industry experts. **ADULTS £12.00 SENIORS £11.00**

8th April 2018: All Knitting Show, Nottingham www.machineknittingmonthly.net

West Park Leisure Centre, Wilsthorpe Road, Long Eaton NG10 4AA.

Look out for Andee Knits, Arnold Bennett – the button man, Sue Booth, Clair Crowston, B Hague & Co, Bill King, David and Jason Hampson from The Wool Cabin, Elaine Cater, the Framework Knitters Museum, the Guild of Machine Knitters, Knits 'n' Bits from Wendy Piper, Machine Knitting Monthly also with Anjo Designs, Mapperley Knit & Natter Club with demonstrations and displays, Marianne Henio, Nina Miklin, Nottinghamshire Spinners, Weavers & Dyers, Rob Fountain, Sue Castro, Erica Thomson and Uppingham Yarns.

June 30th, 2018 Heart of England (HOE) Guild meetup at Crick Village Hall, Bucknills Lane, Crick NN6 7SX from 10 am until 3 pm.

CLUB SERVICES

VOLUNTEERS AVAILABLE AND NEEDED

We offer assistance to new and improving machine knitters. If you would like to volunteer as a Knitting Buddy, please let us know, and we can pair learners with buddies, geographically if possible. If you need assistance, please email Lynda at administrator@longbuckbymk.com in the first instance.



EQUIPMENT HIRE

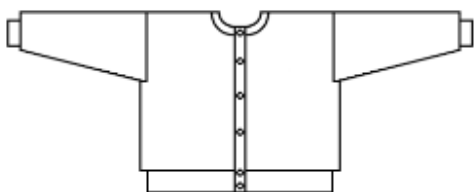
We have a comprehensive list of equipment available for loan, including full machines as well as accessories. See Margaret for details.

We are also setting up a free lending library, and would welcome donations of hardback machine knitting books for this purpose.



PATTERNS

In addition to patterns available in this newsletter and on our website, Lynda is also willing to make bespoke patterns via Knitware for members: these will be available as printouts or pdf files. Form attached for orders, or just let Lynda know the details.



SMALL ADS

WANTED

Machine Knitters needed!

❖ Harrison Winter of HCR knits [<http://www.hcrknits.com/>] Contact: info@hcrknits.com

BUSINESS ADS

❖ Knits 'n' Bits [Long Buckby]

We buy and sell used [serviced] knitting machines and accessories, and also sell books, punchcards, spares and more. Contact Wendy on 01327-842335 or email knitsnbits@live.co.uk. N.B. Response will be a little slower at the moment than usual, but she is still in business.

❖ Elsie's Wool Shop: Ma's Buttons

in Victoria Road, Rushden, just off the high street. They supply wool, all plies, including cones and a large selection of buttons and haberdashery items. email mcginnelsie@yahoo.com or telephone 01933 380610 evenings or weekends.

FOR SALE

Knitting machine table £10. Pat Banyard Smith 01788 822091

Brother Single bed colour changer KHC820a £10 Kath Blundell 01788 578137

WANTED

PLEASE LET ME HAVE DETAILS OF ANYTHING YOU WOULD LIKE TO ADVERTISE IN THIS SPACE. SALES AND WANTED – FREE ADVERTISING!

PUZZLES

| | | | | | | | | |
|---|---|---|---|---|---|---|---|---|
| 3 | | 7 | | | | | 1 | |
| | | 4 | | | 1 | | 2 | 7 |
| | 2 | | | | | | 8 | 3 |
| | 1 | | | | 5 | | | 2 |
| 9 | | | | | 3 | 7 | 5 | |
| 6 | | 5 | | 9 | 2 | | | |
| | 7 | | | 1 | 6 | | | 8 |
| | 6 | | | | | | | |
| | | | 5 | | 8 | | 9 | |

This month we have a Sudoku puzzle, for those who like them and for those who don't, like me!

Sudoku Rules Are Simple

It's the solution that's the challenge.

Complete the Sudoku puzzle so that each and every row, column, and region contains the numbers one through nine only once.

PATTERNS AND PROJECTS

Club member Susan Koffler-Sluijter has shared lots of her knitting on our website Gallery, but, in case you are not connected, here is a flavour, with the details of the top she was wearing at last month's meeting:



Colinette kit of 3- 50 g balls of TAO pure silk in variegated colour way and 3 -25 g balls of Parisienne kidsilk mohair. Based on the jumper that was in the hand-knit book NOSTALGIA.

Details are on Ravelry where I am Merrystitcher. Knitted on the convertible brother at the chunky setting with 2 very different tensions. Crochet finish to neckline and hem, sleeves have a hem in silk with a rib design detail.

Used the green book again for the indented sleeve construction and front scoop, back high necklines.



And, also shown last month, were Pat's 'Loveys', pattern below:

Yellow Rabbit Lovey

Materials Small amounts of Yellow 4 ply acrylic (or 3 strands 2/30)
Red 4 ply acrylic (or 3 strands 2/30)
Purple 4 ply acrylic (or 3 strands 2/30)
Oddment Black 4 ply acrylic (or 3 strands 2/30)
Polyester toy filling

Skirt Knit four pieces

Cast on 84 stitches in waste knit a few rows and hang weights

CAR RC 000 T7 using 2 strands of purple E wrap cast on 84st over this waste knitting. Knit to left. Take out 1 strand purple knit to right. Change to red MY. Now start shaping the skirt by decreasing fully fashioned both sides on the following rows. (These decreases will make the skirt square)



2, 3, 5, 6, 7, 8, 10, Knit contrast stripes in yellow on rows 11 & 12 and 15 & 16.

12, 13, 15, 16, 17, 18, 20 32, 33, 35, 36, 37, 38, 40,

42, 43, 45, 46, 47, 48, 50, 52, 53, 55, 56, 57, 58, 60, 61 & 62

Draw yarn through last stitch to cast off.

Matress stitch seams together to make the square skirt. Pin out to shape and steam flat.
DO NOT TOUCH KNITTING WITH IRON

N.B. The following parts have been knitted using a ribber. If you prefer to use a single bed double the number of stitches and add two for seam. Make sure that you knit the number of rows and decreases that would have been knitted on the top bed only.

Arms Use yellow yarn and main bed and ribber for circular knitting machine set to half pitch.

C.O. 10 st each bed at T 0/0 * Knit zig zag row and hang cast on comb. Small side ribber weights are sufficient. Set machine for circular knitting and knit 3 rows to finish cast on. Keep machine set to circular but change tension to 4/4 RC 000 * Knit 46 rows (i.e. 23 rows each bed) Dec. 1 stitch on each edge on main bed and ribber on row 46 and 52. Knit to Row 56. Rack ribber to P so that stitches align and transfer rem. 6 ribber stitches to top bed. Knit 1 row and cast off. **Knit 2**

Ears Use yellow yarn and main bed and ribber for circular knitting machine set to half pitch.

C.O. 12 st each bed as above * to * Knit 39 rows and then decrease on each edge on rows 40, 48, 56, 64, 66. Knit rem 2 stitches tog on each bed. Transfer rem. ribber stitch to top bed and draw yarn through both stitches and fasten off. **Knit 2**

Head Use yellow yarn and main bed and ribber for circular knitting machine set to half pitch.

C.O. 30 stitches each bed as above * to *

Knit 70 rows straight T 4/4. Watch weights adjust as necessary.

Transfer stitches to Knit 2 tog along both beds Knit 2 rows (1 each bed) at T 5/5

Using a double eyed bodkin or needle draw yarn through each stitch to remove knitting from machine cut yarn keeping a tail to sew up with but don't pull tight yet.

MAKING UP

Head Stuff with filling and then draw thread at top tight. Sew around several times to make sure it is secure. The cast on corners of base can be folded to centre of base and stitched together to make round head. Stitch head securely onto centre of skirt.

Ears Fold bottom cast on corners to centre of base to make ears a better shape stitch together before stitching securely onto back of head.

Arms Pin in position and then stitch to base of head. Make sure that one seam of skirt is down the centre front as this means the skirt can be neatly folded to give as a present.

White Rabbit Lovey

Knit head, arms and ears as above using white.

Skirt Cast on 40 st in waste and knit a few rows. * CAR Change to white yarn and tension 6 Knit 2 rows on all 40 st. Set machine to hold. Change to pink Put 10 st at left to hold and knit 2 rows, put next 10 st. to hold & knit 2 rows, put 3rd set of 10 st in hold and knit 2 rows. Cancel hold.* Repeat from * to* until you have knitted 28 panels. I alternated pink & blue panels with the two row white on all needles. Hook the colours not being knitted on the end needle every two rows otherwise there will be masses of end to darn in!



Strip off on waste. Right sides together replace both sets of stitches onto machine knit 1 row in white & cast off.

Do a pink worm edging at hem and "waist". T6 Hook up 3st from hem of skirt/waist knit 6 rows repeat until finished cast off. Stitch skirt onto base of head and sew arms onto skirt.

Complete head as yellow lovey.

PUZZLE SOLUTION

| | | | | | | | | |
|---|---|---|---|---|---|---|---|---|
| 3 | 5 | 7 | 8 | 2 | 4 | 6 | 1 | 9 |
| 8 | 9 | 4 | 6 | 3 | 1 | 5 | 2 | 7 |
| 1 | 2 | 6 | 9 | 5 | 7 | 4 | 8 | 3 |
| 7 | 1 | 3 | 4 | 8 | 5 | 9 | 6 | 2 |
| 9 | 8 | 2 | 1 | 6 | 3 | 7 | 5 | 4 |
| 6 | 4 | 5 | 7 | 9 | 2 | 8 | 3 | 1 |
| 5 | 7 | 9 | 2 | 1 | 6 | 3 | 4 | 8 |
| 2 | 6 | 8 | 3 | 4 | 9 | 1 | 7 | 5 |
| 4 | 3 | 1 | 5 | 7 | 8 | 2 | 9 | 6 |