

# BRICK

An open-fronted cardigan in 7 sizes, using a multicolour slip stitch pattern. The original has a wide scoop neck: there are alternative instructions given for a crew neck.



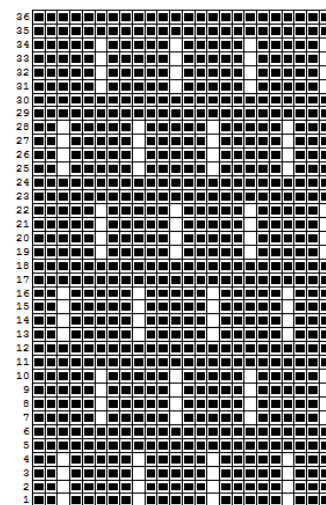
## Finished chest measurements:

38/40/42//44/46/48/50

**Yarn used:** Drops Fabel sock yarn, 'bricks' in Green Print [B], 'mortar' in plain brown [A]. Second size used less than 450g total, about 150g of plain brown, 300g of Green Print.

**Tension:** using T7 on Brother KH891 29 stitches and 50 rows to 4 inches/10cm, in pattern.

**Stitch Pattern:** Stitchworld 306 or punchcard as shown: after knitting hems, set to knit pattern in slip stitch. Knit 2 rows in colour A, then knit 4 rows in colour B. Continue with



this sequence throughout.

## BACK:

1. Cast on 140/148/156/160/168/176/182 sts in WY, using TD6 and open edge method. Work 6 rows, ending COR. Change to MY. Knit 36/36/38/38/38/38 /42rows. You may wish to work a turn or picot row halfway. On final row, set carriage to read card. To complete the hem, graft the cast-on sts to the last row worked.
2. Change to TD7 and Stocking stitch, RC000. Set card to rotate. Set carriage to slip both ways. Work 214/222/224/224/226 /230/ 228 rows in pattern, changing colour as specified. COR.
3. Armhole shaping. Cast off 7/7/8/8/9/9/10 sts at beginning of next 2 rows. COR. Dec 1 st at each end of every alternate row for 26/30/34/34 /36/40/40 rows. Total 242/254/260/260/264/272/270rows with 100/104/106/110/114/118/122 sts remaining.
4. Work a further 72/70/70/74/74/72/74 rows even. COR. Total 314/324/330/334/338/344/344 rows.

### *Scoop Neck instructions:*

5. Shoulder shaping. [You may wish to use holding position method here: set carriage to hold, and push needles into holding position instead of casting off. Then finish by taking stitches off machine on waste yarn. This enables a neat finish by rejoining shoulder edges together to join them in a loose cast off] Cast off 6/7/8/7/8/8/9 sts at beginning of next 2 rows. Cast off 7/7/7/8/8/8/8 sts at beginning of following 4 rows. COR.

6. Total 320/330/336/340/344/350/350 rows with 60/62/62/64 /66/70/72 sts remaining for back of neck. Remove stitches on waste yarn.

*Crew neck instructions [but see suggestion above regarding holding position finishing of shoulders]*

5. *Shoulder shaping:* Cast off 9/9/9/7/7/8/8 sts at beginning of next 4/4/4/4/2/4/6 rows, then 9/10/10/8/8//8/9 at beg of next 2/2/2/4/6/4/2 rows.

6. Total 320/330/336/340/344/350/350 rows with 46/48/50/50/52/54 sts rem.

**FRONT:** Cardigan right side worked first.

1. Cast on 71/75/79/81/85/89/92 sts in WY, using TD6 and open edge method. Work 6 rows, ending COR. Change to MY. Knit 36/36/38/38/38/ 38/42 rows. You may wish to work a turn or picot row halfway. To complete the hem, graft the cast-on sts to the last row worked. On final row set carriage to read punchcard.

2. Change to TD7 and Stocking stitch, RC000. Set card to rotate. Set carriage to slip both ways Work 214/222/224/224/226/ 230/228 rows in pattern. Then follow the instructions according to the neck you want:

Scoop Neck instructions:

3. Armhole. Dec for armhole at right end, as for back. Continue until 256/266/268/270/274/278 276 rows total, with 51/53/54/56/58 /60/ 62 sts remaining.

4. Shape neck. COR. Work 1 row. Take off next 11/11/12/12/12/13/13 sts on to waste yarn for neck edge. Dec 1 st at neck edge (left end) every row 10/10/10/10/11/11/12 times, then dec 1 st at neck edge every other row 10/11/10/11/11/12/12 times, until 20/21/22/23/24/24/ 25 sts remain. Then work 28/26 /32/32/31/31/ 32 row(s) even. Total 314/324/330/334/338/344/344 rows.

5. Shoulder shaping. Cast off as for back.

6. Left cardigan front. Work as for right side, reversing shapings.

*Crew Neck instructions:*

3. Armhole. Dec for armhole at right end, as for back. Continue until R 276/284 / 288/290/294/300/298 with 51/53/54/56/58 /60/ 62 sts remaining.

Work 1 row. Cast off 13/13/13/14/14/15/15sts for neck edge. Dec 1 st at neck edge every row 11/12 /13/12/13/13/14 times till 27/28/28/30/31/32/33 sts remain. Then work to total 314/324/330/334/338/344/344 rows.

5. Shoulder shaping. Cast off as for back.

6. Left cardigan front. Work as for right side, reversing shapings.

## SLEEVES:

1. Cast on 60/60/62/64/66/66/68 sts in WY, using TD6 and open edge method. Work 6 rows, ending COR. Change to MY. Work even for 28 rows. You may wish to work a turn or picot row halfway. To complete the hem, graft the cast-on sts to the last row worked. On final row set carriage to read card.
2. Change to TD7 and Stocking stitch, RC000. Set card to rotate. Set carriage to slip both ways, and work in pattern.
3. Inc 1 st at each end of every 10th/10th/9th/8th/8th/7th/ 7th row 11/18/2/9/9/3/ 3 times, then every 11th/11th/11th/9th /9th/ 8th/ 8th row 6/0/0/12/12/20/20 times to 94/96/102/106/108/112/114 sts (176 /176/180/180/181/181 /181 rows total).
4. Work even to total 186/188/188/188 /188 /188/188rows. COR. /
5. Shape cap. Cast off 7/7/8/8 /9/9/10sts at beg of next two rows (80/82/86/90/90/94/94 sts rem). Dec 1 st at each end of every 2nd row 6/6/7/8/7/10 /7 times, then dec 1 st at each end of every 3rd row 14/14/14/14/16/12/16 times, then dec 1 st at each end of every 2nd row 6/6/7/7/6/9/7 times. Total 254/256/260/262 /264/264/266 rows. COR. Cast off remaining 28/30/30/32/32/32/34 sts loosely.

## SHOULDER SEAMS:

1. Sew fronts to back along shoulder seams, or hang stitches back on machine if you have used the waste yarn method, and then cast off.

## BANDS

### Neck edge

1. Hang back neck stitches centrally on machine with wrong side facing. Then hang the front neck edges on the needles on either side.
2. Knit 10 rows in Colour A at T6, then 1 row at T10, then 10 rows at T6 before casting off. Fold band and stitch down.

### Front edges.

1. Hang a front edge on the machine, then repeat step 2 as for neck edge. Then repeat for second edge. Include buttonholes if you wish [I made one at the top].

## FINISHING:

1. Sew sleeve top to armhole, easing to fit. Sew side and sleeve seams.
2. Darn/weave/sew in all loose ends.

