

# LONG BUCKBY MACHINE KNITTERS



august  
2019



## FORTHCOMING EVENTS

### CLUB MEETINGS

#### TODAY

12<sup>th</sup> Aug OPEN MEETING



At the open meeting we will have machines out for demonstration or practice, but we will not be demonstrating to the whole group. We could also have a 'show and tell': please let Lynda know if you wish to do this: you will then get a five-minute slot in our programme

---

#### FUTURE MEETINGS

9<sup>th</sup> Sept ACCESSORIES  
14<sup>th</sup> Oct SUE BOOTH: SHOULDERS  
11th Nov BASIC MAINTENANCE  
9<sup>th</sup> Dec AGM/ COMPETITION, DISPLAY AND SALES/End of year celebration

At meetings where we do not have an outside speaker, club members are encouraged to participate. Please see Lynda if you would like to demonstrate or show a special technique or item

- Please let us know if you have a special requirement in case of emergency, e.g. a mobility problem which would mean a special arrangement in case of evacuation of the building
- Please also respect the demonstrators and other members, some of whom have hearing impairment, by not talking during the demonstrations. **\*\*PLEASE SWITCH OFF YOUR PHONE!\*\***

#### WORKSHOPS



ALL WORKSHOPS RUN FROM 1-4 [ARRIVE FROM 12.30, BRING YOUR LUNCH IF YOU WISH] AT LONG BUCKBY COMMUNITY CENTRE. COST £15 TO INCLUDE USE OF EQUIPMENT. THE MAIN FOCUS OF THE WORKSHOPS IS AS BELOW, BUT ALTERNATIVELY, AS EVER, JOIN OUR WORKSHOPS TO PRACTISE OR LEARN ANOTHER SKILL OF YOUR CHOICE [BUT DO DISCUSS THIS WITH US FIRST!] TEA AND COFFEE PROVIDED. MACHINES ALSO PROVIDED, LET US KNOW WHICH MACHINE YOU PREFER, SO WE CAN MAKE IT AVAILABLE.

16<sup>th</sup> Sept **BEGINNERS WORKSHOP:** booking by August meeting, please. If we don't get enough response, we will cancel it.

## CLUB NEWS

The committee would like to have feedback on current and future club meetings. We can use this to tailor the club programme to meet members' needs and interests. This can be oral, written or by email!

We will be meeting in October to finalise next year's agenda: please let us have some member input



## OTHER EVENTS

**10 – 13th October Knitting and Stitching Show, Alexandra Palace, London**

<https://www.theknittingandstitchingshow.com/london/>

**24th October – 1st November 2019**

**THE LIVING THREADS GROUP NINETEENTH EXHIBITION. "CONNECTIONS"**

**The Nineteenth Living Threads Exhibition will be at Trent College, Long Eaton, Nottingham**

<https://livingthreadstextileartists.com/exhibition/>

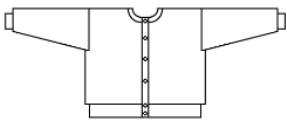
## CLUB SERVICES

### LIBRARY

We have a comprehensive free lending library and would welcome donations of hardback machine knitting books for this purpose. See Margaret for loans.



### PATTERNS



In addition to patterns available in this newsletter and on our website, Lynda is also willing to make bespoke patterns via Knitware for members: these will be available as printouts or pdf files. Form attached for orders, or just let Lynda know the details.

## Small Ads

### FOR SALE AND WANTED



#### FOR SALE

**Two brother machines** punch card pattern with knit leaders and ribbers with tables I would like £200 each  
**Sue 07702309582**

#### WANTED

**PLEASE LET ME HAVE DETAILS OF ANYTHING YOU WOULD LIKE TO ADVERTISE IN THIS SPACE.  
SALES AND WANTED – FREE ADVERTISING!**



C H W N K U A F E C M T U L Y  
 I D T R N K M O W F F D C Q U  
 N H C T I T S G N I K C O T S  
 O N A C T M S W S Y E F O I F  
 R R R R T N E T T E R C N M G  
 T E R W I H E S A E L T A E B  
 C T I E N B A M T N A D P L B  
 E T A I G M B N H R D E E R E  
 L A G G M I U E S C T A U E D  
 E P E H A O N I R A A S R B N  
 K U Y T C N A A G H H T W D T  
 N P B W H E N I F D P P T T J  
 R H O J I E L S I R I A F A C  
 A R X J N M P U N C H C A R D  
 Y C A S E Z N C H U N K Y Q M

ATTACHMENT	BED	BRUSH	CARRIAGE
CASE	CHUNKY	COMB	ELECTRONIC
FAIRISLE	FINE	GATEPEG	INTARSIA
KNITTINGMACHINE	LACE	MAST	NEEDLES
PATTERN	PUNCHCARD	RIBBER	ROWCOUNTER
STANDARD	STOCKINGSTITCH	WEIGHT	YARN



Although this is not machine knitted, it could be a way of using up those ends of yarn! That's what I did anyway. The waistcoat was knitted in random scraps of 4 ply yarn, on 3.5 mm needles. This size is about size 14, this can be adjusted with needle size or by adding 2 stitches per square for each size increment. E.g. 27 stitches for size 16.

Start knitting in diagonal rows, left side first as indicated on the diagram/schematic below.

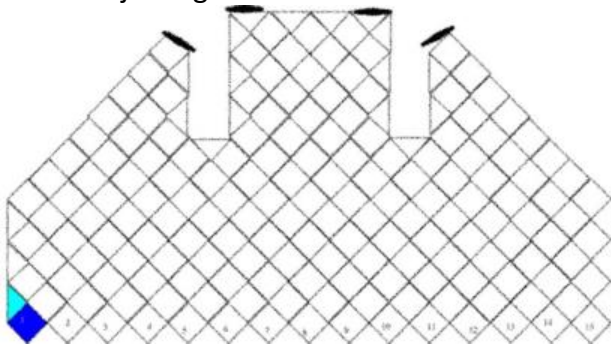
I knitted with 25 stitch squares, as basic instructions diagram below, but with 2 extra rows at the beginning. Cast on 25 stitches, knit row 1 as stated, then row 1a as follows: K11 slip1 K2tog pss0 K10 bring yarn forward, slip 1 purl wise (23).

Row 1b is then as row 3. Continue from row 2 to end.

The second item of the first row is a triangle. Pick up 12 stitches, including the last remaining stitch of the first square, along the top left side of that square. Then knit half a square: on right side k to last 2 stitches and k2 together, knit one row, and repeat these two rows until one stitch remains.

Triangles on the right side begin with the decrease but are similar. Triangles at the top are knitted like the basic square, but with k2 tog at beginning and end of right-side rows.

Finishing: I crocheted round all the straight edges, i.e. all but the bottom edge. Then I did a second round, this time joining the shoulders with crochet. I had woven in all the yarn ends as I knitted.



Schematic

I used two colours for each square, striping as indicated on these instructions. At the end of the square, I changed one colour for a new one, and continued with the remaining colour, so that there was some continuity, and fewer ends to weave in. Some of the yarn was thicker than 4 ply, being hand spun, but most was 4 ply remnants

**PATCHWORK KNITTING – basic square with garter stitch ridges/ stocking stitch stripes**

Cast on 23 stitches, using the two needle method.

Row	Instructions [right side in bold]	
1	Knit to last stitch, bring yarn forward, slip 1purlwise	
2	<b>K10 Slip 1 K2tog pss0 K9 bring yarn forward, slip 1 purlwise. [21]</b>	
3	Knit 1, purl to last stitch, slip 1purlwise	
4	<b>K9 Slip 1 K2tog pss0 K8, yarn forward slip 1 purlwise [19]</b>	
5	Knit to last stitch, bring yarn forward, slip 1purlwise	
6	<b>K8 Slip 1 K2tog pss0 K7, yarn forward slip 1 purlwise [17]</b>	
7	Knit 1, purl to last stitch, slip 1purlwise	
8	<b>K7 Slip 1 K2tog pss0 K6, yarn forward slip 1 purlwise [15]</b>	
9	Knit to last stitch, bring yarn forward, slip 1purlwise	
10	<b>K6 Slip 1 K2tog pss0 K5, yarn forward slip 1 purlwise [13]</b>	
11	Knit 1, purl to last stitch, slip 1purlwise	
12	<b>K5 Slip 1 K2tog pss0 K4, yarn forward slip 1 purlwise [11]</b>	
13	Knit to last stitch, bring yarn forward, slip 1purlwise	
14	<b>K4 Slip 1 K2tog pss0 K3, yarn forward slip 1 purlwise [9]</b>	
15	Knit 1, purl to last stitch, slip 1purlwise	
16	<b>K3 Slip 1 K2tog pss0 K2, yarn forward slip 1 purlwise [7]</b>	
17	Knit to last stitch, bring yarn forward, slip 1purlwise	
18	<b>K2 Slip 1 K2tog pss0 K1, yarn forward slip 1 purlwise [5]</b>	
19	Knit 1, purl to last stitch, slip 1purlwise	
20	<b>K1 Slip 1 K2tog pss0 , yarn forward slip 1 purlwise [3]</b>	
21	Knit to last stitch, bring yarn forward, slip 1purlwise	
22	<b>Knit 3 together, fasten off [or start next square] [1]</b>	

Basic instructions

## SUPPLIES DIRECTORY

[in no particular order, and not necessarily endorsed by LBMK!]

### MACHINE KNITTING YARN [FAIRLY LOCAL]

Yeoman Yarns: <https://yeoman-yarns.co.uk> primarily a mail/internet order business for hand and machine knitting yarns, but with a small shop in their Leicester warehouse available.

Uppingham Yarns: <https://www.wools.co.uk/index.php> hand and machine knitting yarns, spinning and weaving supplies too

Bedford Sewing and Knitting: <https://www.bsk.co.uk> mainly sewing now, but still some machine knitting yarn and spares

#### FURTHER AFIELD:

Fairfield Yarns: [Heywood, Lancs] <http://www.fairfielddyarns.co.uk/> mainly machine knitting yarn, some equipment

Airedale Yarns [Keighley, Yorks] <https://airedaleyarns.co.uk/index.php/> mainly machine knitting yarn

### OTHER FAIRLY LOCAL YARN SHOPS

Get Knitting [Northampton] <https://www.yarnshopnorthampton.co.uk/>

Toft <https://www.toftuk.com/> Alpaca farm/ shop in Dunchurch near Rugby

Wool Warehouse [Leamington Spa] <https://www.woolwarehouse.co.uk/> mainly postal/online, but with a small shop on site

Bella Knit [Corby] <http://www.bellaknit.co.uk/>

Janknits [Wellingborough] <http://www.janknits.co.uk/contact%20us%20.html>

Jools Wools [Finedon] <http://joolswools.co.uk/>

The Wool Shop [Newport Pagnell] <http://www.the-wool-shop.com/>

Knit One [Leicester] <http://www.knitone.uk.com/>

The Knitting Company [Leicester] <https://www.facebook.com/knittingcompany>

### MACHINE KNITTING PATTERNS

Ann Lavene <http://home-machine-knitting.co.uk/about-anne/>

Marianne Henio <http://heniocreative.com>

### REPAIRS AND SERVICE

Richard Jones (ex Brother engineer).Tel: 01386 833339 (after 6pm)Mobile: 07818 033563

Email: [richardjones47@btinternet.com](mailto:richardjones47@btinternet.com) Knitting and sewing machine repairs.

SILVER [Rushden] <http://www.silverviscount.co.uk>