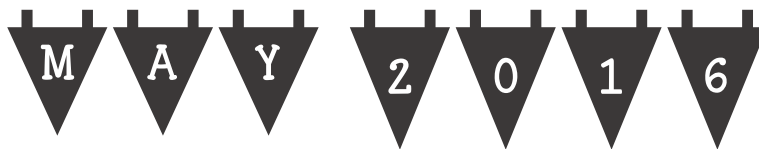


LONG BUCKBY MACHINE KNITTERS



FORTHCOMING EVENTS

CLUB MEETINGS

Today

9th May

HOLES: decorative and functional:
various forms of lace, button holes and interesting uses for eyelets

COMING UP:

13 th June	RIPPING YARNS: All about yarn, and how to knit with unusual and challenging yarn.
11th July	CHANGING DIRECTION Knitting in different ways: sideways, modular as well as shaping using holding position
8th Aug	STITCHED UP: A VARIETY OF PATTERNS Exploring the versatility of automatic pattern capability, as well as a bit of hand manipulation
12th Sept	ACCESSORIES Knitting accessories
10th Oct	SET IN SLEEVES on the machine with guest speaker SUE BOOTH
14th Nov	GADGETS practical session, opportunity to practise with gadgets like colour changer, cast off linker etc.
12th Dec	COMPETITION, DISPLAY AND SALES End of year celebration

WORKSHOPS



Workshops for 2016 are as follows: [although the workshops have a theme, we can run personalised workshops at the same time e.g. beginners' techniques, software/ computing for knitters, or using specific equipment]

20 th June	1-4 Doors open at 12.30	WORKSHOP: machines supplied/ booking essential Combining Yarns: Following on from club meeting, including mixing yarns for effect	£15
19 th Sept	1-4 Doors open at 12.30	WORKSHOP: machines supplied/ booking essential Using the Garter Bar	£15

All workshops to be booked in advance by non-refundable full payment. Cheques will be cashed at the time of the workshop, and should be made out to Long Buckby Machine Knitters.

OTHER EVENTS

30 May The annual Shipston Wool Fair in Shipston-on-Stour, Warwickshire <http://shipstonwoolfair.co.uk/>

18th June 2016: National Guild Day with AGM, Reepham & Cherry Willingham Village Hall, Reepham, Lincolnshire. <http://www.guild-mach-knit.org.uk/>

UNIVERSITY DEGREE SHOWS:

NORTHAMPTON: SCHOOL OF THE ARTS DEGREE SHOW 2016

Date: Friday 10 June 2016 – Sunday 19 June 2016 [free admission]

Location: Avenue Campus, St George's Avenue, Northampton NN2 6JD

<http://www.northampton.ac.uk/events/school-of-the-arts-degree-show-2016/>

LEICESTER DE MONTFORT DEGREE SHOW:

Saturday 18 June 2016 : 11am – 4pm/Monday 20 June 2016 – Thursday June 2016: 10am – 5pm

<http://www.dmu.ac.uk/degree-show/degree-show/degree-show.aspx>

NOTTINGHAM TRENT DEGREE SHOW

Catwalk Show tickets available to buy: <http://www.ntu.ac.uk/art-and-design-degree-show/>

Knitwear Design: Wednesday 25 May

Fashion Design: Thursday 26 May

SMALL ADS

FOR SALE

Knitmaster HK160 mid gauge machine. It is in good working condition and comes with all the necessary tools. The manual and the extremely rare Leclerc book are also included along with several punched and unpunched cards. I would like £180 but am open to offers.

Marion Rutherford 01234712755



Brother machines and accessories [prices quoted but open to offers]

KH940 with KR850 ribber £100

KH890 with KR850 ribber £100

Designaknit8 complete with printed manual £100

Hague linker with home-made stand £50 Garter carriage KG95 £50 Linker 8310 boxed £10

Intarsia carriage 8210 and intarsia yarn holder boxed £10 Rib transfer carriage boxed £10

Colour changer for electronic £20 Colour changer for single bed £10

Yarn masts [several] £5 each Knitleader and sheets £20

Neck templates £5 Skein winder/swift £10 Yarn winders x 2 each £5 Inex Steaming kit £10

Swiss Darning kits £5 each Blocking mat £5 Tables x 2 £5 each

Also various Sugarcraft cutters and accessories

Please contact patricianunn3009@gmail.com

WANTED

Machine Knitters needed!

❖ Mhairi MacLachlan (maclachlan.mhairi@gmail.com) 07813 897 528

❖ **Harrison Winter of HCR knits** [<http://www.hcrknits.com/>] Contact: info@hcrknits.com

BUSINESS ADS

❖ **Knits 'n' Bits [Long Buckby]**

We buy and sell used [serviced] knitting machines and accessories, and also sell books, punchcards, spares and more. Contact Wendy on 01327-842335 or email knitsnbits@live.co.uk. N.B. Response will be a little slower at the moment than usual, but she is still in business.

❖ **Elsie's Wool Shop: Ma's Buttons**

in Victoria Road, Rushden, just off the high street. They supply wool, all plies, including cones and a large selection of buttons and haberdashery items.

email mcginnelsie@yahoo.com or telephone 01933 380610 evenings or weekends.

PLEASE LET ME HAVE DETAILS OF ANYTHING YOU WOULD LIKE TO ADVERTISE IN THIS SPACE.
SALES AND WANTED – FREE ADVERTISING!

Holes puzzle

E N C V N Y T M I A N G P N D
 W L E A A R U O U W E N G A Y
 O N O R R Q E T O R E I T Q D
 T P N H M R O T E L D L F N Y
 V G E H N M I F T Z L O T M V
 Y J J N A O S A E A E O I P K
 M K F T I N T L G B P T E S I
 Z F I N A N O T J E P D R V S
 D C B R D H G Z U Y O N S O W
 S A T T E L E Y E B R A C V L
 L T E L A D D E R S D H E A A
 A K I R P I C K U P C A B L E
 C C U T H X E P U N C H R Q G
 E U V X C T T O L S T S I W T
 P T R U I H P A B B D G X G Q

AUTOMATIC	BUTTONHOLE	CABLE	CARRIAGE
DROP	EYELET	HANDTOOLING	HOLE
LACE	LADDER	NEEDLE	OPENING
PATTERN	PICKUP	PUNCH	SLOT
STITCH	THREAD	TOOL	TRANSFER
TUCK	TWIST	VENT	YARN

As promised at the last meeting, Pat has worked on the tuck lace cowl to bring us these alternatives:

DETACHABLE COLLAR

Cast on 66/65 T9

Knit 4 rows, transfer stitches for picot edge, knit 4 rows then hang hem.

Change to T8 and set up card 3 to tuck over next 2 rows. COR

Leaving 6 needles in work in centre, put LH needles to hold and set carriage to hold. Knit 1 row.

Put RH needles to hold and knit 1 row.

*Put 3 needles opposite the carriage back into work. Knit 1 row *

Repeat from * to * until all needles are back in work.

Knit 50 rows.

Make a row of eyelets then cast off.

Hang each side edge in turn on to the machine, and make a picot hem before casting off.

Alternatively, as the collar is a little tight over the head, you might prefer to knit the side picot trim in two parts and use a button & loop/brooch/icord tie to join it together.



ALTERNATIVE [LARGER] COLLAR



Cast on 171 stitches in waste yarn. Knit a few rows before changing to main yarn.

Knit 4 rows T7.

Transfer alternate stitches to make a picot.

Knit 4 rows, then hook up to 1st row of main yarn.

T8 knit 1 row to left.

Transfer needles for pattern.

|0||x|x 6stitch repeat, x = needle out of work/ |= needle in work/0 =centre

Knit 1 row whilst programming pattern. Set machine to hold and knit in tuck.

Put needles to right of centre 4 stitches in work in hold. Knit to right. Put needles to left of centre 4 stitches in work in hold. Knit to left.

Put next 4 needles opposite the carriage into work, knit 1 row and repeat from * to * until all stitches are back in work. Cancel Hold.

Continue knitting 100 rows over all needles in work.

Bring the needles in non-working position into work [171 stitches]

Knit 2 rows. Cast off as preferred.

At sides make picot hems [61 stitches].

TIP

Make sure end needle doesn't tuck. On Knitmaster, bring end needle at carriage end to HP then it will knit not tuck.

AND ANOTHER ONE

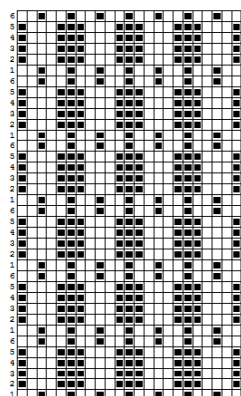
Cast on 85-86

Hem as before. T7 knit 4 rows, make eyelet row, knit 4 rows. Then hook up.

T8 transfer needles to this pattern:

|0||x|x||x|x Shape as above

Use Punch card as shown



RESOURCES FOR LACE KNITTING

Guild members can find Beginners How to on Lace Knitting here: http://www.guild-mach-knit.org.uk/membersgmk/forms/newsletters/Nov2013_NL.pdf [page 15] and here: http://www.guild-mach-knit.org.uk/membersgmk/forms/newsletters/Feb2014_NL.pdf [page 14]

Susan Guagliumi has some sheets to download on lace knitting, as well as some free patterns: http://www.guagliumi.com/free_stuff/downloads.html

And if you weren't already sold on lace knitting, take a look at the latest Vogue knitwear http://www.vogueknitting.com/magazine/spring_summer_2016_fashion_preview

PATTERN

MAY

A raglan summer top, about 26 inches in length, with waist shaping and a slightly curved hemline.



Tension: 30 stitches and 42 rows at T7. Yeoman Panama was used, but any yarn with that gauge might suit. The second size [chest 40] took under 300g of yarn.

Sizes: Finished chest 38/40/42/44/46/48 inches

BACK:

1. Cast on 146/154/162/166/174/182 sts in MY, using T6 and closed edge method. Knit 10 rows, then transfer every other stitch for a picot edge, then knit 10 rows. To complete the hem, hook the cast on row on to the needles, and

knit 2 rows at T7.

2. RC000. COR

- Set carriage to hold.
- Put all working needles left of 0 into hold, apart from the 10 at the rightmost side of these needles. Knit 1 row
- Put all working needles right of 0 into hold, apart from the 10 at the leftmost side of these needles. Knit 1 row – 20 needles at centre are in working position.
- Bring back 10 needles opposite the carriage on subsequent rows until all needles are back in work.

Work to RC022

3. Waist Shaping. Dec 1 st at each end of next row, then every following 5th row

13/13/14/12/11/11 times to 118/126/132/140/150/158 sts. Knit to RC90/100/94/88/93/88.

Inc 1 st at each end of next row, then every following 7th row 9/9/10/10/9/9 times to

138/146/154/162/170/178 sts. Knit to 172/184/186/180/178/182 COR.

4. Armhole shaping. Cast off 7/8/8/9/9/9 sts at beginning of next 2 rows. COR.

5. Raglan shaping. Dec 1 st at armhole end(s) of every 3rd row 8/12/12/4/2/0 times, then dec 1 st at armhole end(s) of every 2nd row 32/27/29/42/47/48 times. Size 44 only, dec 1 st every row 4 times.

6. Total 262/276/282/278/280/284 rows with 52/52/56/56/58/60 sts remaining for back of neck.

7. T6 knit 5 rows, transfer for picot edge, knit 5 rows and cast off.

FRONT:

1-2 Follow steps 1 to 4 as for back. COR.

5. Raglan shaping. Continue until 226/238/242/236/238/242 rows total. Then shape neckline as follows, continuing raglan shaping AT THE SAME TIME.
4. Shape neck. COR. Put carriage to hold. Put all LH needles to HP and RH needles 1-12/12/13/13/14/14
5. Right neck. LH needles in HP. Continue armhole shaping. Dec 1 st at neck edge every row 12/12/13/13/13/14 times.
6. Work 24/26/27/29/29/28 rows even at neckline, continuing shaping at armhole. Total 262/276/282/278/280/284 rows. Put remaining 2 stitches into hold.
7. Left neck. COL. Work as for right neck, reversing shapings. When complete, take off on waste yarn.

SLEEVES:

1. Cast on 96/100/106/110/112/116 sts. Make a 16 row hem with a picot edge after 8 rows.
2. Change to TD7 and Stocking stitch, RC000.
3. Knit 2 rows.
4. Shape cap. Cast off 7/8/8/9/9/9 sts at beg of next two rows (82/84/90/92/94/98 sts rem). Dec 1 st at each end of every 3rd row 12/14/12/12/14/10 times, then dec 1 st at each end of every 2nd row 26/24/29/30/29/35 times. Take off remaining stitches on waste yarn.

Neckline: Rehang stitches from waste yarn from right sleeve, front and left sleeve. Knit 5 rows on T6, make a picot edge, knit 5 rows, then cast off.

Make up: Stitch down neck edge. Join raglans and sleeve and side seams using mattress stitch.

Alternative: to make a sleeveless version, try decreasing on the back raglan until you have 84/84/88/88/90/92 sts then knit straight to final row count , leaving you with 16 stitches each side for a shoulder seam

