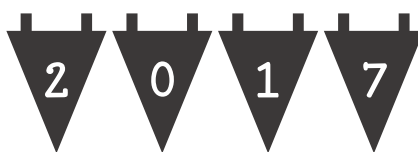
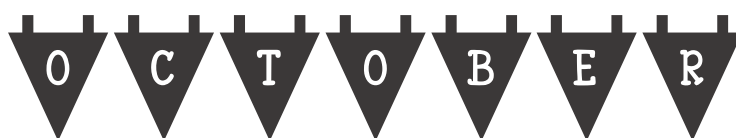


# LONG BUCKBY MACHINE KNITTERS



## FORTHCOMING EVENTS

### CLUB MEETINGS

**Today**

9<sup>th</sup> Oct

**PLATING** with guest speaker **SUE BOOTH**

### COMING UP:

13<sup>th</sup> Nov

**GADGETS** practical session with various accessories

If there are any gadgets you would like to see in action, please let us know beforehand, to give us the best possible chance of meeting your needs!

11<sup>th</sup> Dec

**COMPETITION, DISPLAY and SALES [Free Entry!]**

Including Wendy Piper [Knits'n'Bits].

At this meeting, members are invited to submit an entry [or two] for our annual showcase event, with the chance to be selected by members' secret ballot for the Long Buckby Trophy: the winner keeps the trophy for a year, and retains a coaster for life!

- At meetings where we do not have an outside speaker, club members are encouraged to participate: please see Lynda if you would like to demonstrate or show a special technique or item
- Please let us know if you have a special requirement in case of emergency, e.g. a mobility problem which would mean a special arrangement in case of evacuation of the building
- Please also respect the demonstrators and other members, some of whom have hearing impairment, by not talking during the demonstrations. **\*\*PLEASE SWITCH OFF YOUR PHONE!\*\***

### WORKSHOPS



ALL WORKSHOPS RUN FROM 1-4 AT LONG BUCKBY COMMUNITY CENTRE. COST £15 TO INCLUDE USE OF EQUIPMENT.



See calendar for 2018 for details of next year's workshops.

On the left is a collage from our September workshop [BUTTONS], which went well, with a variety of home-made buttons being produced out of yarn, polymer clay, leather etc.

## OTHER EVENTS

11<sup>th</sup> -12<sup>th</sup> November 2017 Nottingham Yarn Expo <https://www.nottinghamyarnexpo.com/>

11th-November 2017: Festiwool, Hitchin [festiwool.com](http://festiwool.com)

## CLUB SERVICES



## VOLUNTEERS AVAILABLE AND NEEDED

We offer assistance to new and improving machine knitters. If you would like to volunteer as a Knitting Buddy, please let us know, and we can pair learners with buddies, geographically if possible. If you need assistance, please email Lynda at [administrator@longbuckbymk.com](mailto:administrator@longbuckbymk.com) in the first instance.



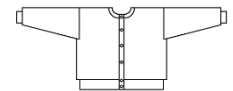
## EQUIPMENT HIRE

We have a comprehensive list of equipment available for loan, including full machines as well as accessories. See Margaret for details. [List attached to this newsletter](#)  
We are also setting up a free lending library, and would welcome donations of hardback machine knitting books for this purpose.



## PATTERNS

In addition to patterns available in this newsletter and on our website, Lynda is also willing to make bespoke patterns via Knitware for members: these will be available as printouts or pdf files. Form attached for orders, or just let Lynda know the details.



## SMALL ADS

### WANTED

#### Machine Knitters needed!

- ❖ Mhairi MacLachlan ([maclachlan.mhairi@gmail.com](mailto:maclachlan.mhairi@gmail.com)) 07813 897 528
- ❖ Harrison Winter of HCR knits [<http://www.hcrknits.com/>] Contact: [info@hcrknits.com](mailto:info@hcrknits.com)

### BUSINESS ADS

#### ❖ Knits 'n' Bits [Long Buckby]

We buy and sell used [serviced] knitting machines and accessories, and also sell books, punchcards, spares and more. Contact Wendy on 01327-842335 or email [knitsnbits@live.co.uk](mailto:knitsnbits@live.co.uk). N.B. Response will be a little slower at the moment than usual, but she is still in business.

#### ❖ Elsie's Wool Shop: Ma's Buttons

in Victoria Road, Rushden, just off the high street. They supply wool, all plies, including cones and a large selection of buttons and haberdashery items. email [mcginnelsie@yahoo.com](mailto:mcginnelsie@yahoo.com) or telephone 01933 380610 evenings or weekends.

## FOR SALE

Malcolm says:

"I have about 150 cones of knitting machine yarn in Peterborough for sale currently and a further 500-600 cones to bring from my late parent's home to also sell. I am selling the cones for £5, the price is adjusted for small cones or larger ones over 1kg. There are all colours, textures and weights. There are several accessories and 2 knitting machines for sale too, a Brother KH894 and a Knitmaster 560 electronic."

The email address is [59yorkie@gmail.com](mailto:59yorkie@gmail.com)



**Knitting machine table** £10. Pat Banyard Smith 01788 822091

**Brother Single bed colour changer KHC820a** £10 Kath Blundell 01788 578137

**Brother Knitting Machine Model KH-891 and KR-850** Ribber in Horn Cabinet including Bench Seat/Storage Box

Accessories and instruction manual, Transfer Carriage and Knit-Leader

All in excellent condition but machine requires new sponge bar

Many extras including:-

Substantial stock of industrial and 4-ply yarn

Machine knitting maintenance book with video tape

Cone winder/Hole punch and punch cards/Work box for accessories

Assorted hardback and paperback "how to" and pattern books

Folder with many "useful hints" and patterns

Price : £275 o.n.o. Please contact Eileen Andrew 01788 822159 or [jpandrew@tiscali.co.uk](mailto:jpandrew@tiscali.co.uk)

**PLEASE LET ME HAVE DETAILS OF ANYTHING YOU WOULD LIKE TO ADVERTISE IN THIS SPACE. SALES AND WANTED – FREE ADVERTISING!**

PLATING

TIPGANL 

--	--	--	--	--	--	--

  
1 16 34 8 32 33

EEERFD 

--	--	--	--	--	--

  
24 12

NOABIMNICOT 

--	--	--	--	--	--	--	--	--	--	--

  
27 5 21 20 31 23 36

LOOCUR 

--	--	--	--	--	--

  
14

TUEREXT 

--	--	--	--	--	--	--

  
18 13 15

NIGLIN 

--	--	--	--	--	--

  
17 11 30 7

KUCT 

--	--	--	--

  
4

DEOLUB-DESDI 

--	--	--	--	--	--

 - 

--	--	--	--	--

  
26 28 2 9 29

NCTASORT 

--	--	--	--	--	--	--	--

  
25 19 35 3 37

NYRA 

--	--	--	--

  
22 10 6

1	2	3	4	5	6	7	8	9	10	11	12	13	14	15	16	17	18	19	20	W			23	24	
25	26	27	28	29	30	31	32	33	22	34	35	36	37												

Unscramble each of the clue words.  
Copy the letters in the numbered cells to other cells with the same number.

PLATING LINKS

For members attending club meetings, you will find chapter 7 on Plating in the book "A Machine Knitter's Guide to Creating Fabric", which is available on loan from our library [see above]

There is remarkably little online about plating, but here are a few links:

<https://www.ravelry.com/projects/estherkate/machine-knitting---stitch-structures---plating>

describes what plating is and can do

<https://annsroost.wordpress.com/2015/05/13/plating-on-the-knitting-machine/>

is a personal account of a learning process with plating

<http://slisen.blogspot.co.uk/2013/10/platingwho-knew.html>

this is another personal account of learning how to plate

## PATTERNS AND PROJECTS

No patterns this month, but two related ideas I have tried myself – the ideas came from weaving forums.



This is an idea for a winding station: the wooden trestle is from IKEA, <http://www.ikea.com/gb/en/products/desks/table-tops-legs/finnvard-trestle-with-shelf-beech-art-00225293/> costing £25. It is adjustable and, because it is entirely wooden, can be screwed into etc. with ease.

I find the fully extended height perfect for winding, and, as you can see, I have a wooden swift attached for skein winding.

Related to this is another, cheaper idea, for making cone stands. This involves plastic test tubes, with plastic stoppers. I screwed through the plastic stoppers on to a piece of wood, then pushed each tube onto its stopper. The result is not quite as firm as dowel cone stands, but firm enough to keep the cones in place. It costs less than £3 for 10 at [Amazon](#) or on [Ebay](#). The picture shows my new cone stand, with a dowel one behind for comparison.



## PUZZLE ANSWERS

plating	feeder	Plating is an excellent way of combining yarns
combination	colour	
texture	lining	
tuck	double-sided	
contrast	yarn	

PROVISIONAL LONG BUCKBY MACHINE KNITTERS CALENDAR 2018

VISIT OUR WEBSITE [WWW.LONGBUCKBYMK.COM](http://WWW.LONGBUCKBYMK.COM)

DATE [ALL MONDAY]	Time	Topic	Cost
8 <sup>th</sup> Jan	2-4 Doors open at 1.30	PATTERNS: availability and issues	£2.50
12 <sup>th</sup> Feb	2-4 Doors open at 1.30	PATTERNS: designing, adapting, using software	£2.50
12 <sup>th</sup> March	2-4 Doors open at 1.30	BILL KING	£4
9 <sup>th</sup> April	2-4 Doors open at 1.30	NECKLINES	£2.50
16 <sup>th</sup> April	1-4 Doors open at 12.30	<u>BEGINNERS WORKSHOP ON NECKLINES</u>	£15
14 <sup>th</sup> May	2-4 Doors open at 1.30	LACE stitch technology	£2.50
11 <sup>th</sup> June	2-4 Doors open at 1.30	SEWING MACHINE TECHNIQUES FOR MACHINE KNITTERS with Erica Thomson	£4
9 <sup>th</sup> July	2-4 Doors open at 1.30	MACHINE KNITTING AND OTHER CRAFTS	£2.50
16 <sup>th</sup> July	1-4 Doors open at 12.30	<u>WORKSHOP</u> PATTERN ADAPTATION	£15
13 <sup>th</sup> Aug	2-4 Doors open at 1.30	COLOUR AND DESIGN	£2.50
10 <sup>th</sup> Sept	2-4 Doors open at 1.30	STITCH PATTERN TECHNOLOGY	£2.50
17 <sup>th</sup> Sept	1-4 Doors open at 12.30	<u>WORKSHOP</u> : ONE PUNCHCARD, MANY PATTERNS	£15
8 <sup>th</sup> Oct	2-4 Doors open at 1.30	RIBBING with Sue Booth	£4
12 <sup>th</sup> Nov	2-4 Doors open at 1.30	GADGETS AND MACHINES display and maintenance	£2.50
10 <sup>th</sup> Dec	2-4 Doors open at 1.30	COMPETITION, DISPLAY AND SALES End of year celebration	free