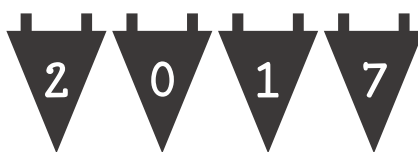


LONG BUCKBY MACHINE KNITTERS



FORTHCOMING EVENTS

CLUB MEETINGS

Today

11th Sep

BUTTONS

COMING UP:

9th Oct

PLATING with guest speaker SUE BOOTH

13th Nov

GADGETS practical session with various accessories

11th Dec

COMPETITION, DISPLAY and SALES

- At meetings where we do not have an outside speaker, club members are encouraged to participate: please see Lynda if you would like to demonstrate or show a special technique or item
- Please let us know if you have a special requirement in case of emergency, e.g. a mobility problem which would mean a special arrangement in case of evacuation of the building
- Please also respect the demonstrators and other members, some of whom have hearing impairment, by not talking during the demonstrations. ****PLEASE SWITCH OFF YOUR PHONE!****

WORKSHOPS

September 18th

BUTTONS

places available



This workshop is a practical approach to making buttons from yarn, fibre, textile or polymer clay – maybe more!

ALL WORKSHOPS RUN FROM 1-4 AT LONG BUCKBY COMMUNITY CENTRE. COST £15 TO INCLUDE USE OF EQUIPMENT.

CLUB SERVICES



VOLUNTEERS AVAILABLE AND NEEDED

We offer assistance to new and improving machine knitters. If you would like to volunteer as a Knitting Buddy, please let us know, and we can pair learners with buddies, geographically if possible. If you need assistance, please email Lynda at administrator@longbuckbymk.com in the first instance.



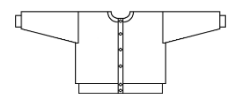
EQUIPMENT HIRE

We have a comprehensive list of equipment available for loan, including full machines as well as accessories. See Margaret for details. [List attached to this newsletter](#)
We are also setting up a free lending library, and would welcome donations of hardback machine knitting books for this purpose.



PATTERNS

In addition to patterns available in this newsletter and on our website, Lynda is also willing to make bespoke patterns via Knitware for members: these will be available as printouts or pdf files. Form attached for orders, or just let Lynda know the details.



OTHER EVENTS

16th and 17th September 2017

10 am until 4pm

KNITSNBITS AUTUMN SALE -2 DAYS ONLY

Hill Farm House, Upper Heyford, Northampton NN7 3NB

only 2 mins from M1, junction16 Free on site parking

Machines - Ribbers – Accessories- Books - Patterns – Spares All at special sale prices

For more details ,please get in touch EMAIL: knitsnbits@live.co.uk

TEL: 01327 842335 (9am to 5pm only Monday to Friday)

11th -12th November 2017 Nottingham Yarn Expo <https://www.nottinghamyarnexpo.com/>

11th-November 2017: Festiwool, Hitchin festiwool.com

SMALL ADS

FOR SALE

Knitting machine table £10. Pat Banyard Smith 01788 822091

Brother Single bed colour changer KHC820a £10 Kath Blundell 01788 578137

Brother Knitting Machine Model KH-891 and KR-850 Ribber in Horn Cabinet including Bench Seat/Storage Box

Accessories and instruction manual, Transfer Carriage and Knit-Leader

All in excellent condition but machine requires new sponge bar

Many extras including:-

Substantial stock of industrial and 4-ply yarn

Machine knitting maintenance book with video tape

Cone winder/Hole punch and punch cards/Work box for accessories

Assorted hardback and paperback “how to” and pattern books

Folder with many “useful hints” and patterns

Price : £275 o.n.o. Please contact Eileen Andrew 01788 822159 or jpandrew@tiscali.co.uk

WANTED

Machine Knitters needed!

❖ Mhairi MacLachlan (maclachlan.mhairi@gmail.com) 07813 897 528

❖ Harrison Winter of HCR knits [<http://www.hcrknits.com/>] Contact: info@hcrknits.com

BUSINESS ADS

❖ Knits 'n' Bits [Long Buckby]

We buy and sell used [serviced] knitting machines and accessories, and also sell books, punchcards, spares and more. Contact Wendy on 01327-842335 or email knitsnbits@live.co.uk. N.B.Response will be a little slower at the moment than usual, but she is still in business.

❖ Elsie's Wool Shop: Ma's Buttons

in Victoria Road, Rushden, just off the high street. They supply wool, all plies, including cones and a large selection of buttons and haberdashery items. email mcginnelsie@yahoo.com or telephone 01933 380610 evenings or weekends.

PLEASE LET ME HAVE DETAILS OF ANYTHING YOU WOULD LIKE TO ADVERTISE IN THIS SPACE. SALES AND WANTED – FREE ADVERTISING!

Buttons Wordsearch

A V X S W W C D O N C D T S Y
 U D B G I H Y R C L R T A V O
 V C F R I G C O C L O A A L R
 Y O E N V P W C V N A E Y O K
 L B E B L I Z I K V O Y R Y S
 C S O S D V S N D W S D P T H
 E M W K L I Y V S H E B L V I
 T E H C O R C F A O U U I T R
 I I O S N T S W T W W K O I E
 H W I C E X E I B O V S U A B
 Y U J C U H X S V O Y G D Z B
 I F I M O S Y D R D O E P O I
 S L Y U Q Y U F Q O I Q W P I
 T L E F J W L J S R D M Y H N
 S G K B Q F Q M E I G V V L B

CHINESE
ICORD

CLAY
KNOT

CROCHET
WIRE

DORSET
WOOD

FELT
YARN

FIMO
YORKSHIRE

BUTTONS

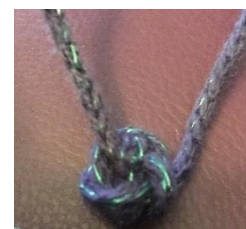
Today we are looking at home-made buttons and other closures: there are various links at <http://www.longbuckbymk.com/index.php/hints-tips/24-button-up> to sites which offer instruction and materials.

Amongst others there are

Dorset buttons/Yorkshire buttons/Chinese knot buttons/Wooden buttons/ Polymer clay buttons/Felted wool buttons

Another link to macramé, which also features traditional closures, is <http://www.free-macrame-patterns.com/learn-macrame.html> and these could also be made with i-cords

I tried the Chinese knot button with an i-cord made with wire and yarn, 2 strands of wire to one strand of 4 ply. It worked quite well, but I could do with a bit of practice!



JO

This month's pattern is an easy to knit cowl neck jumper knitted in Yeoman Fifty Fifty 'heavy' two ply yarn. Wide range of sizes: chest [ins] 30 – 56. Link below <http://www.longbuckbymk.com/index.php/patterns/376-jo>



I-CORDS

Last month I demonstrated a buttonhole band made with a double i-cord. I was asked to give instructions this month, so here they are:

Knit the first i-cord: Cast on 4 stitches [or as many as you want to try] and set the carriage to slip one way. Knit until the cord is as long as you want it to be, then cast off.

Knit the second i-cord: Repeat as the first, but this time pick up a stitch from the side of the first i-cord, and place it on the leftmost needle in work, each time the carriage is on the right. Start at the base of the i-cord and try to keep the stitches you are picking up from the same 'line'. You should then get a double i-cord. If you then miss the pick up for eight rows, before recommencing, you will get a buttonhole. Continue as long as you wish.



Figure 1 attaching the second icord to the first



Figure 2 finished double band with buttonholes

You could even make a triple or quadruple i-cord, if you want a wider band.

PUZZLE ANSWERS

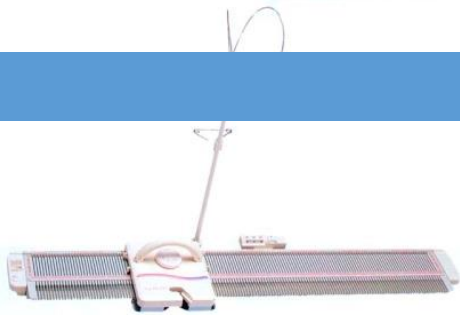
```

+ + + + W C D + N + + + Y
+ + + + I H + R C + R T + + O
+ + + R I + + O + L O A + + R
+ + E N + + + C + N A + Y + K
+ + E + + + + I K + + Y + + S
+ S + + + + + + + + + + H
E + + + + + + + + + + + I
T E H C O R C + + + + + + R
+ + + + + T + + + W + + + + E
+ + + + + + E + + O + + + + +
+ + + + + + S + O + + + + +
+ F I M O + + + R D + + + + +
+ + + + + + + + O + + + + +
T L E F + + + + + D + + + + +
+ + + + + + + + + + + + +
    
```

(Over, Down, Direction)

- CHINESE (7, 1, SW)
- CLAY (9, 2, SE)
- CROCHET (7, 8, W)
- DORSET (11, 14, NW)
- FELT (4, 14, W)
- FIMO (2, 12, E)
- ICORD (8, 5, N)
- KNOT (9, 5, NE)
- WIRE (6, 1, SW)
- WOOD (10, 9, S)
- YARN (13, 4, NW)
- YORKSHIRE (15, 1, S)

Machine Knitting Items for Hire



LK150 Knitting Machine

DK to Chunky, plain knitter, easy to use, light to carry

£50 returnable deposit



Hague Linker

Use for joining pieces of work & decorative linking

£15 returnable deposit



Garter Bar

Use for turning work to produce garter stitch,

weaving vertically, etc

£10 returnable deposit



Brother Intarsia Carriage

£10 returnable deposit



Brother Transfer Carriage

£10 returnable deposit.



Daruma Yarn Twister

Use to twist two or more yarns together to create interesting effects

£10 returnable deposit



Jumbo Yarn Winder

Royal Jumbo Yarn Winder will wind up to 500g

£10 returnable deposit



Knitmaster Weaving Arm

£10 returnable deposit



Royal Wool Winder

£10 returnable deposit



Pleated Skirt Pattern & Steam Kit

£5 returnable deposit



Hague Yarn Twisting Stack

£10 returnable deposit



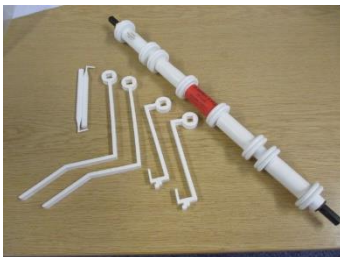
Brother Card Punch

£10 returnable deposit



Skein Holder

£10 returnable deposit



Intarsia Multi Yarn Break

£10 returnable deposit



Interlocking Blocking Mats

£10 returnable deposit

PROVISIONAL LONG BUCKBY MACHINE KNITTERS CALENDAR 2018

VISIT OUR WEBSITE WWW.LONGBUCKBYMK.COM

DATE [ALL MONDAY]	Time	Topic	Cost
8 th Jan	2-4 Doors open at 1.30	PATTERNS: availability and issues	£2.50
12 th Feb	2-4 Doors open at 1.30	PATTERNS: designing, adapting, using software	£2.50
12 th March	2-4 Doors open at 1.30	BILL KING	£4
9 th April	2-4 Doors open at 1.30	NECKLINES	£2.50
16 th April	1-4 Doors open at 12.30	<u>BEGINNERS WORKSHOP ON NECKLINES</u>	£15
14 th May	2-4 Doors open at 1.30	LACE stitch technology	£4
11 th June	2-4 Doors open at 1.30	SEWING MACHINE TECHNIQUES FOR MACHINE KNITTERS with Erica Thomson	£4
9 th July	2-4 Doors open at 1.30	MACHINE KNITTING AND OTHER CRAFTS	£2.50
16 th July	1-4 Doors open at 12.30	<u>WORKSHOP</u> PATTERN ADAPTATION	£15
13 th Aug	2-4 Doors open at 1.30	COLOUR AND DESIGN	£2.50
10 th Sept	2-4 Doors open at 1.30	STITCH PATTERN TECHNOLOGY	£2.50
17 th Sept	1-4 Doors open at 12.30	<u>WORKSHOP</u> : ONE PUNCHCARD, MANY PATTERNS	£15
8 th Oct	2-4 Doors open at 1.30	RIBBING with Sue Booth	£4
12 th Nov	2-4 Doors open at 1.30	GADGETS AND MACHINES display and maintenance	£2.50
10 th Dec	2-4 Doors open at 1.30	COMPETITION, DISPLAY AND SALES End of year celebration	£2.50

Custom Pattern Request: please complete/circle chest size, tension gauge and style

Women's	Men's	Children's
30 in (76 cm)	32 in (81 cm)	18 in (46 cm) - Newborn
32 in (81 cm)	34 in (86 cm)	20 in (51 cm) - 6 month
34 in (86 cm)	36 in (91 cm)	22 in (56 cm) - 12 month
36 in (91 cm)	38 in (96 cm)	20 in (51 cm) - age 2
38 in (96 cm)	40 in (101cm)	22 in (56 cm) - age 4
40 in (101 cm)	42 in (106 cm)	24 in (61 cm) - age 6
42 in (106 cm)	44 in (111 cm)	26 in (66 cm) - age 8
44 in (111 cm)	46 in (116 cm)	28 in (71 cm) - age 10
46 in (116 cm)	48 in (121 cm)	30 in (76 cm) - age 12
48 in (121 cm)	50 in (127 cm)	32 in (81 cm) - age 14
50 in (127 cm)	52 in (132 cm)	
52 in (132 cm)		
54 in (138 cm)		
56 in (142 cm)		

Note: Children's sizes ages are only approximate. Measure to be accurate.

Tension

TEST SWATCH GAUGE (over 10cm = 4")
Stitches:
Rows:
Tension dial

Style

<u>EASE STYLE</u>	<u>GARMENT STYLE</u>	<u>BODY LENGTH</u>	<u>BODY HEM</u>
Skintight	Pullover / Cardigan	Crop / Waist	Ribbing
Tight		Regular / Hip	Moss St Band
Moderate	BODY SHAPE	Thigh	Garter St Band
Comfortable	Straight	Above Knee	Folded Edge
Oversized	Fitted Waist	Knee	Frill
	A-Line	Calf / Ankle	Crochet / No Hem
<u>SHOULDER STYLE</u>	<u>SLEEVE STYLE</u>	<u>SLEEVE LENGTH</u>	<u>SLEEVE HEM</u>
Drop / Modified Drop	Narrow / Moderate Taper	Full	Ribbing
(Grafted / Not Grafted)	Lantern (Straight	Three-Quarters	Moss St Band
Set-in:	Modified Lantern	Half / Short	Garter St Band
Classic / Gathered / Pleated	Bishop / Bell	Cap	Folded / Frill
Saddle / Raglan / Round Yoke	Dolman	Sleeveless (Inset)	Crochet / No Hem
<u>FRONT NECK</u>	<u>BACK NECK</u>	<u>COLLAR STYLE</u>	<u>FRONT BAND</u>
Round / High Round	Round / High Round	Single / Double Band	Vertical Rib
V	V	Shirt (Split)	Horizontal Rib
Square	Square	Rolled Edge	Picot (folded)
Scoop / Ballet	Scoop / Ballet	Funnel / Cowl	Moss Stitch
Butted Boat	Butted Boat	Turtleneck	Garter Stitch
Overlapped Boat	Overlapped Boat	Shawl Collar	None
Keyhole	Flat / Shallow	Simple / Shaped Hood	
Flat / Shallow	Backless	None / Crochet Edge	