

# LONG BUCKBY MACHINE KNITTERS

N E W S

J U N E  
2 0 1 9



## FORTHCOMING EVENTS

### CLUB MEETINGS



#### TODAY

10<sup>th</sup> June ERICA THOMSON – TASSELS

We will be having our equipment electrically tested at 12, so if you need anything tested, you could bring it along.

#### FUTURE MEETINGS

8<sup>th</sup> July GENERAL CRAFTS

A showcase event, in the larger hall upstairs, with members invited to bring any craft to demonstrate. Please let us know in advance [by the June meeting] if you need a table [or two], so that we can plan the space.

12<sup>th</sup> Aug OPEN MEETING

At the open meeting we will have machines out for demonstration or practice, but we will not be demonstrating to the whole group. We could also have a 'show and tell': please let Lynda know if you wish to do this: you will then get a five-minute slot in our programme.

9<sup>th</sup> Sept ACCESSORIES

14<sup>th</sup> Oct SUE BOOTH: SHOULDERS

11<sup>th</sup> Nov BASIC MAINTENANCE

9<sup>th</sup> Dec AGM/ COMPETITION, DISPLAY AND SALES/End of year celebration

At meetings where we do not have an outside speaker, club members are encouraged to participate. Please see Lynda if you would like to demonstrate or show a special technique or item

- Please let us know if you have a special requirement in case of emergency, e.g. a mobility problem which would mean a special arrangement in case of evacuation of the building
- Please also respect the demonstrators and other members, some of whom have hearing impairment, by not talking during the demonstrations. **\*\*PLEASE SWITCH OFF YOUR PHONE!\*\***

### WORKSHOPS



**ALL WORKSHOPS RUN FROM 1-4 [ARRIVE FROM 12.30, BRING YOUR LUNCH IF YOU WISH] AT LONG BUCKBY COMMUNITY CENTRE. COST £15 TO INCLUDE USE OF EQUIPMENT. THE MAIN FOCUS OF THE WORKSHOPS IS AS BELOW, BUT ALTERNATIVELY, AS EVER, JOIN OUR WORKSHOPS TO PRACTISE OR LEARN ANOTHER SKILL OF YOUR CHOICE [BUT DO DISCUSS THIS WITH US FIRST!] TEA AND COFFEE PROVIDED. MACHINES ALSO PROVIDED, LET US KNOW WHICH MACHINE YOU PREFER, SO WE CAN MAKE IT AVAILABLE.**

16<sup>th</sup> Sept **BEGINNERS WORKSHOP:** booking by August meeting, please. If we don't get enough response, we will cancel it.

Our July meeting, as described above, will be in the larger upstairs room, with tables available for members to exhibit and/or sell their work, please book. We will also have a club sales table: if you want to donate anything, please bring it along [craft related, not necessarily machine knitting] but please also be prepared to remove it if not sold [or sacrifice it to the bin]. We have no space!!!!

Thus far, we have the following booked:

Fran. Hand made cards

Lynn. Jewellery

Pat. Sewing with knitted fabric

Lynda. Spinning with drop spindles, to try out. Small looms weaving. Information on fibres.

Kathy. Screen printing. You can bring your own items to print, or buy a bag from Kathy.

Margaret and Mary. Rag rugs and more...

Sale table. All types of craft items welcome.

---

## A TEXTILE VISIT TO LEICESTER

By Lynda and Pat

Yeoman Yarns [[www.yeoman-yarns.co.uk](http://www.yeoman-yarns.co.uk)] had an Open Day on Friday, June 7<sup>th</sup>, which, although not widely publicised, attracted us as machine knitters, as they are an excellent source of machine knitting yarn [as well as hand knitting yarn]. They do have shop facilities, but, on this Open Day, they had more yarn on show, and some bargain end-of-range cones, some of which we [reluctantly! Do we need more yarn?] bought.

Then it was on to much more interesting things. Stoll GB [[www.stollgb.com/](http://www.stollgb.com/)] also have their premises in this back street of Leicester, and they, too, had opened their doors. They make garments, but their main function is as a design and training company. We were shown their finishing room, where garments are linked, checked for errors, and steamed. Then it was on to visit the machine room, where they have several enormous computerised industrial knitting machines, with gauges varying from 1.5 to 14, if I remember rightly, which corresponds to very bulky knitting down to ultra-fine. The finest machine had 32 feeder cones in different colours, so was capable of producing amazing patterns.

We were shown how computerisation enables the users to make garments with integral button bands, shoe uppers ready shaped on the machine, and fabric with integral 'stuffing', as well as many other technical uses. Machine knitters will understand plated fabric, which involves two different yarns knitted together back to back. These machines are also able to alternate the yarns mid row.

We went on to another textile company which produces knitted fabric, Montreux Fabrics [[www.montreuxfabrics.co.uk/](http://www.montreuxfabrics.co.uk/)]. They have shop facilities for fabrics of all kinds, as well as designing and producing clothing in small orders, but for me, the real interest is that all fabric is British made, and their jersey fabrics are made by them. The real star is their micro modal jersey, which is made with wood pulp in an environmentally friendly process and is wonderfully soft.

All in all, we had a busy but very inspiring day out.

## MACHINE KNITTING NEWS

The Guild of Machine Knitters held a ballot to decide how to wind up their business: the overwhelming preference was for merging with the Knitting and Crochet Guild <https://kcguild.org.uk/> . Current membership will be transferred, and members should have received further information via a short newsletter already. They should also receive the next issue of Slipknot, the KCG newsletter/journal.

My copy of Slipknot arrived last week, with two articles by Liz Holness.

## OTHER EVENTS



The embroidery group meet monthly 7pm-9pm on the 3<sup>rd</sup> Wednesday. Members free, visitors £5 (all are welcome). Contact: 01604 580935

## NEXT EVENTS IN 2019

at the Methodist Church, Daventry NN11 4FB

### Wednesday 19th June Mixed Media with Anne Griffiths

Be inspired by Anne and see her contemporary textile artwork. Free for members £5 for visitors.

**Saturday 22nd June - 10am – 4pm National Day of Stitch at Holy Cross Church, Daventry**  
Heart of the Stitch will be celebrating National Day of Stitch with demonstrations and an exhibition of members work.

In conjunction with Daventry Arts Festival, including photography exhibition, and musical performances throughout the day, free refreshments.

## FIBRE EAST

**SATURDAY 27 JULY 2019 - SUNDAY 28 JULY 2019**

Redborne Upper School & Community College, Flitwick Road, Ampthill, Bedford, MK45 2NU

**24th October – 1st November 2019**

**THE LIVING THREADS GROUP NINETEENTH EXHIBITION. "CONNECTIONS"**

**The Nineteenth Living Threads Exhibition will be at Trent College, Long Eaton, Nottingham**

## CLUB SERVICES

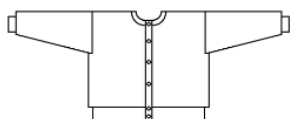
### EQUIPMENT HIRE

We have a comprehensive list of equipment available for loan, including full machines as well as accessories. See Margaret for details.

We are also setting up a free lending library and would welcome donations of hardback machine knitting books for this purpose.



## PATTERNS



In addition to patterns available in this newsletter and on our website, Lynda is also willing to make bespoke patterns via Knitware for members: these will be available as printouts or pdf files. Form attached for orders, or just let Lynda know the details.

## Small Ads

### FOR SALE AND WANTED



#### FOR SALE

Two brother machines punch card pattern with knit leaders and ribbers with tables I would like £200 each  
Sue 07702309582

#### WANTED

Card punch and skein winder/swift wanted by Trish Scott. Contact administrator@longbuckbymk.com.

**PLEASE LET ME HAVE DETAILS OF ANYTHING YOU WOULD LIKE TO ADVERTISE IN THIS SPACE. SALES AND WANTED – FREE ADVERTISING!**

## PUZZLES



### Tassels puzzle

Unscramble each of the clue words. Copy the letters in the numbered cells to other cells with the same number.

LTSASE      

				5	6

RENIFG      

8	12				11

DEEG      

14			10

SITTW      

			7	

NIISHF      

				4	

DINB      

			13

GANGIHN      

		2				

BESMNMEILETLH      

															3

TAUFEER      

						1	9

1	2	3	4	5	6	7	

	o	
8		9

	v			y	o				
10		11	12			13	14		

 !

## TODAY'S THEME: TASSELS

Erica Thomson will demonstrate a method of making tassels on the knitting machine. She is keen on making them, and describes them further at:

<http://www.ericaco.uk/tassels/index.htm>

Although Erica mentions using them 'all over the house' in soft furnishing etc., there are other uses.

They are often used on clothing, as an embellishment, and even in jewellery, such as the earring on the cover page.

Northants Police are asking for teddies to bring comfort to children in distressing events. A similar request is described here with patterns <https://www.dorset.police.uk/news-information/article/5393>

The request, on Facebook, was worded thus:

“Police are calling for volunteers to knit soft toys which will be given to children, in order to provide some comfort when officers attend incidents at their homes.



The toys are called ‘Bobby Buddies’ and local knitting enthusiasts are invited to make them; in the knowledge their donation could help a child at a potentially distressing time.

Detective Sergeant Jen Castle is from the force’s Domestic Abuse Prevention and Investigation Team. She said:

“We hope that a Bobby Buddy will bring some comfort during what can be a confusing, frightening time for young children.

“Working in this area of work, we are aware children must not be overlooked during police attendance. Bobby Buddies will help attending officers engage with children whose voice should never go unheard”.

If you are a knitting enthusiast or a knitting group that would like to help, please email [Rachel.Percival@northants.pnn.police.uk](mailto:Rachel.Percival@northants.pnn.police.uk) with your details. The pattern will then be supplied. The cost of materials will be reimbursed.”

Or you could use our machine knitted teddy pattern

<http://www.longbuckbymk.com/images/stories/patterns/machine%20knit%20teddy%20pattern.pdf>



## ANSWERS TO PUZZLE

Words: tassel fringe edge twist finish bind hanging embellishment feature

Phrase: Tassels for everyone!