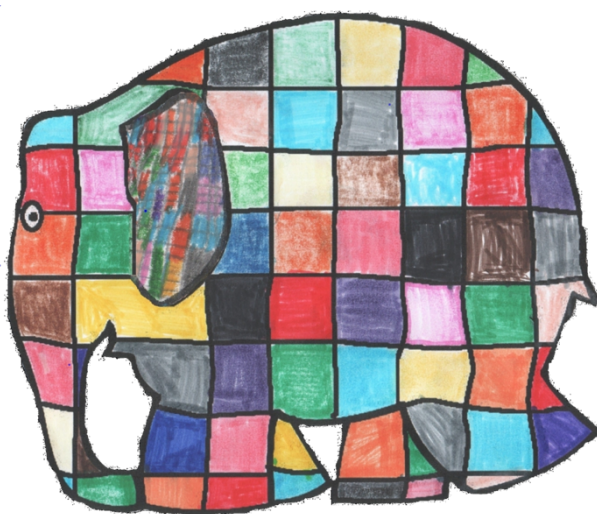
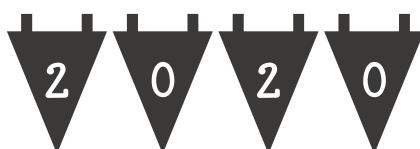


LONG BUCKBY MACHINE KNITTERS



FORTHCOMING EVENTS

CLUB MEETINGS

TODAY

FUTURE 10th Feb Modular Knitting How to join knitting, merge other crafts with your knitting, add on edges with crochet etc.



MEETINGS

9th March* Visiting Speaker: Vikki Haffenden [author of Translating between Hand and Machine Knitting]**

This meeting will open at 12.30 for lunch [bring your own] and access to a sales table, as well as a raffle.

For the raffle, we would welcome contributions!

For the Bring and Buy sales table, please bring craft related items which might be of interest. We hope to have a larger turnout than usual, and this would be a good opportunity to have a clearout!

20th April. Machine Knitting Forum – a chance to catch up on skills and friends! Multiple rolling demonstrations, basic skills to more advanced, patterns, gadgets and garments. Bring your projects to show, work on or seek advice about

11th May Ribber basics with Kathy and Pat How to set up your ribber, use it for edges and more

8th June* Visiting Speaker: Erica Thomson**

Erica will demonstrate how to use pressing to enhance your knitting

13^h July Machine Knitting Forum – a chance to catch up on skills and friends!

10th Aug Holding Position How to use this simple technique for shaping and other effects.

14th Sept Edges [hems necks bands etc]

Demonstration of edging techniques on the knitting machine, and other ways to finish your knitting

12th Oct Machine Knitting Forum – a chance to catch up on skills and friends!

9th Nov Maintenance. DIY maintenance and tools

14th Dec AGM/ COMPETITION, DISPLAY AND SALES. End of year celebration

At meetings where we do not have an outside speaker, club members are encouraged to participate.

Please see Lynda if you would like to demonstrate or show a special technique or item

- Please let us know if you have a special requirement in case of emergency, e.g. a mobility problem which would mean a special arrangement in case of evacuation of the building
- Please also respect the demonstrators and other members, some of whom have hearing impairment, by not talking during the demonstrations. ****PLEASE SWITCH OFF YOUR PHONE!****
-

CLUB NEWS



The committee would like to have feedback on current and future club meetings. We can use this to tailor the club programme to meet members' needs and interests. This can be oral, written or by email!

Newsletter of Long Buckby Machine Knitters ©2020 www.longbuckbymk.com

OTHER EVENTS

Saturday 15th February 2020, 2-5pm

Craft Cupboard Clearout

Napton Village Hall,

The Crescent, Napton-on-the-Hill, CV47 8LS

Bargains galore! New and used craft supplies from fellow crafters: yarn, fabric, haberdashery, beads, magazines, jewellery findings, papers, stamps, etc.

Nobody browses but everybody buys!

Free on-site parking, wheelchair access plus disabled toilet. Refreshments.

50p entry fee in aid of Warwickshire and Northamptonshire Air Ambulance



Sunday, April 5th 2020

Nottingham Machine Knitting Show

West Park Leisure Centre, Wilsthorpe Road, Long Eaton NG10 4AA

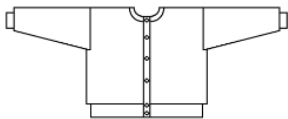
CLUB SERVICES

LIBRARY

We have a comprehensive free lending library and would welcome donations of hardback machine knitting books for this purpose. See Margaret for loans.



PATTERNS



In addition to patterns available in this newsletter and on our website, Lynda is also willing to make bespoke patterns via Knitware for members: these will be available as printouts or pdf files. Just let Lynda know the details.

Small Ads

FOR SALE AND WANTED



FOR SALE

Two brother machines punch card pattern with knit leaders and ribbers with tables I would like £200 each
Sue 07702309582

LBMK has several knitting machines for sale. If you are looking for an older punch card machine, in working order, you might find a bargain here.

Lynda at administrator@longbuckbymk.com

Contact Pat at chairman@longbuckbymk.com or

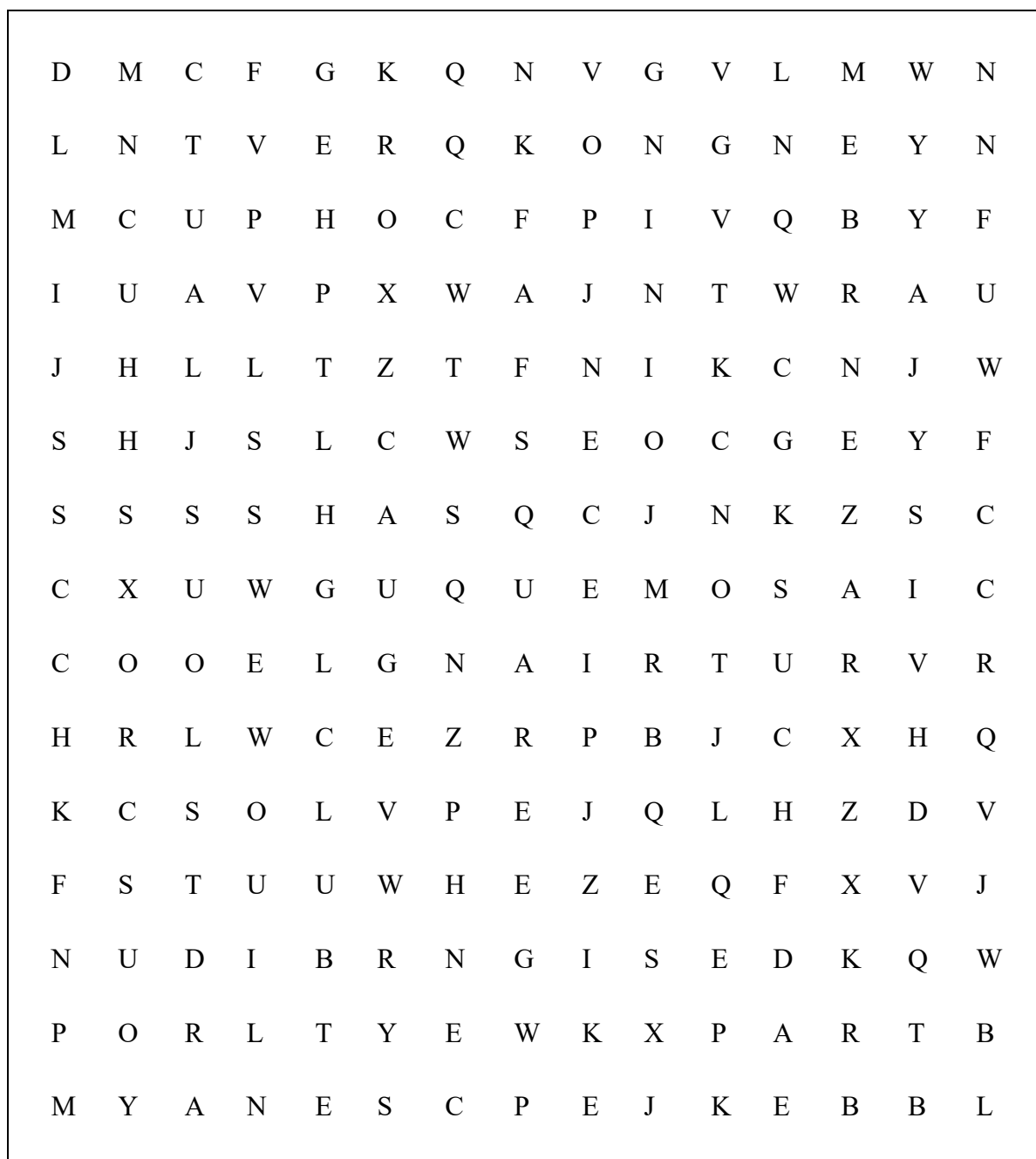
WANTED

PLEASE LET ME HAVE DETAILS OF ANYTHING YOU WOULD LIKE TO ADVERTISE IN THIS SPACE. SALES AND WANTED – FREE ADVERTISING!



WORD SEARCH

Modular Knitting



CIRCLE
JOINING
PART
SECTION
STITCH

COLOUR
MODULE
PATCHWORK
SHAPE
TRIANGLE

DESIGN
MOSAIC
PIECE
SQUARE

MODULAR KNITTING

Today we are looking at joining shapes together to make knitted items.

We might use machine knitting exclusively, or add hand knitted parts, or crochet, or woven materials.

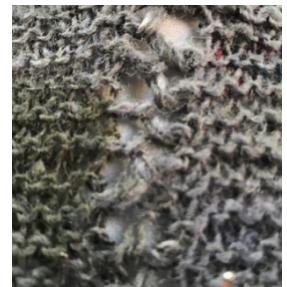
One of the issues with such projects is joining, so here is a list of some techniques.

On the machine:

- Using open stitches, or putting closed edge on machine using transfer tool, put two pieces of knitting on machine with public sides facing each other. Knit one row. Then cast off. [Alternative, which gives decorative finish: put one piece of knitting on machine, then e-wrap on those stitches, then put the second piece on, before casting off .]
- On one piece to be joined, knit a decorative edge. Then join the other piece under this decorative edge.
- Knit eyelets on alternate rows on the edges to be joined. When knitting the second piece, place the first edge over the left most needle on alternate rows, whilst making eyelets on the second needle in.
- Knit eyelets on the second stitch from the edge every 4 rows on first piece. On second piece, knit 4 rows, then use 2 prong transfer tool, put it through the first eyelet of the first piece, then pick up the end two stitches on the opposite end to the carriage, pull them carefully through the eyelet then replace. Knit 4 rows then repeat.

By hand:

- Kitchener stitch/ grafting https://www.youtube.com/watch?v=ZuPG7Cv_uHY Diana Sullivan Lesson 22
- Mattress stitch <https://www.yarnspirations.com/gb/how-to-sew-a-mattress-stitch-seam.html> and <https://theknittingspace.com/mattress-stitch-tutorial/>
- Faggotting https://www.youtube.com/watch?v=qQSTX_9kqUI shows embroidery, but this can be used to join knitted pieces. My attempt is shown here on the right, with hand knit .



Crochet:

Make a foundation row along the edges to be joined, with one double crochet followed by one chain. Then use the same technique to join the two together on the second round.

INSPIRATION

<https://www.ravelry.com/patterns/library/crochet-squares-edged-jacket> is a machine knit cardigan/jacket with granny squares attached – very colourful

<https://www.ravelry.com/patterns/library/combo-tee> is a pattern combining knitting and fabric

<https://home-machine-knitting.co.uk/about-anne/> is Anne Lavene's website, where she uses crochet joins as above on her amazing knitwear

<http://www.twistedtailor.co.uk/> is the website of designer Kim Morgan, who is a Saori weaver and agent, who also machine knits, and combines both crafts in stylish clothing: the gallery tab does not work, but the designs appear on the home page as a slide show if you are patient!

Newsletter of Long Buckby Machine Knitters ©2020 www.longbuckbymk.com

PATTERN

TUCK LACE MOHAIR SCARF BY HAZEL GREEN



[This pattern was originally published in the Guild of Machine Knitters' newsletter – the Guild has now merged with the Knitting and Crochet Guild.]

Thanks to Judith for the photo of her scarf!

Hazel described her inspiration: "I think that I probably got the idea for this scarf from To and Fro, a wonderful magazine which dropped through the door every three months. It was a subscription magazine produced by knitters for knitters and I remember when I first subscribed I received two year's worth of back issues in one go! I didn't do any housework that weekend!!

When I knitted the first scarf in this pattern I used Kid Mohair from Nina Miklin. I purchased three balls from a show and they cost about £4 each for only 40grms. I felt very extravagant. I am talking twenty odd years ago, probably twenty-five (doesn't time fly when you are having fun?). As you can imagine there was no way that I was going to use more than one ball for a scarf.

This has been a good standby gift ever since. Nowadays I use Yeoman's Elsa."

THE SCARF

The yarn is Yeoman Elsa or a fine brushed acrylic.

The tension is 8 OR 9 on a standard gauge machine.

The stitch is tuck lace.

Use punch card as shown

Bring 44-0-45 needles to wp.

The needle settings are as follows (see diagram below) 5 ns in wp, 3 ns out of work, 1 wp, 3 OW, repeat across needle bed to required width (89) ending with 5 ns in WP.

To check the correct needles are tucking, cast on with waste yarn and knit a few rows. Set machine to tuck and knit 6 rows to make sure that the x needles are tucking. If they aren't then try the following:

- Check that the needle setup is correct
- Reverse the punch card
- Electronics put the NI cam the other side of the tucking needle
- Brother — cancel the end needle cams selector.

Right then — to the easy bit

Newsletter of Long Buckby Machine Knitters ©2020 www.longbuckbymk.com

	N1 cam Centre 0									
Needle set-up:										
A position	111	111	111	111	111	111	111	111	111	111
B position	11111	1	11111	1	11111	1	11111	1	11111	1
	X	X	X	X	X	X	X	X	X	X
	5 end needles					5 end needles				

T7 knit 1 row with the nylon cord.

E-wrap cast on. Knit 3 rows stocking stitch.

Use plenty of weight or pull down as you knit.

Set machine to tuck and knit 396 rows (or until your 40 grm ball is about to run out) This length will make a nice neck scarf length. (500 rows will give a scarf which can be doubled up and the ends threaded through the loop)

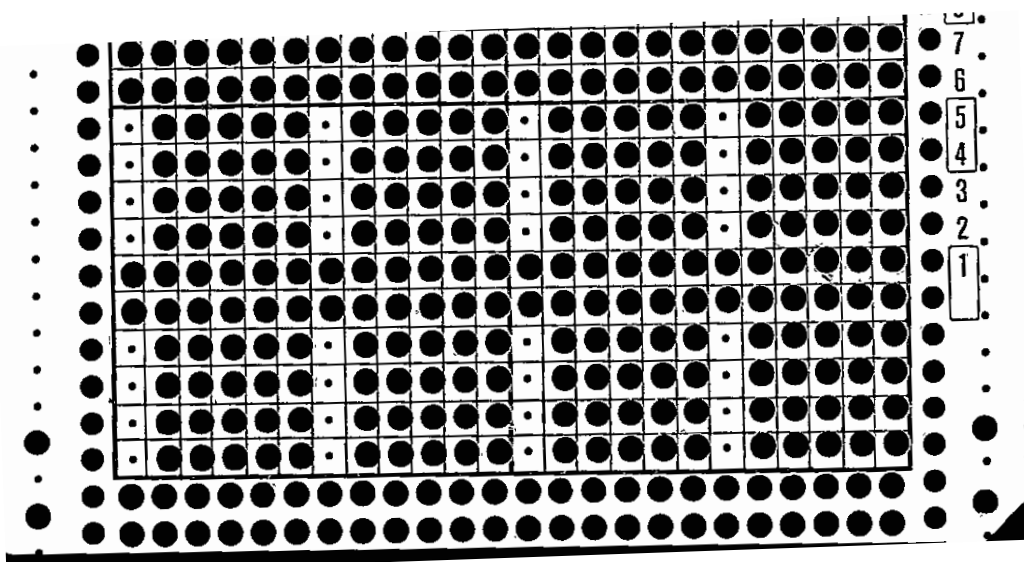
Change to stocking stitch and knit 3 rows.

Cast off making a chain stitch where there is an empty needle.

Pull out the nylon cord to remove the waste yarn.

When it comes off the machine pull it lengthways and as if by magic the edges turn under, this is why the needles start and end with five working needles. I usually give the scarf a light press pulling the cast on and cast off edges into points. Finish off with a light brush with a hairbrush.

Have fun!



Hazel Green

Knitmaster start on Row 1, Brother on row 3

[in no particular order, and not necessarily endorsed by LBMK!]

MACHINE KNITTING YARN [FAIRLY LOCAL]

Yeoman Yarns: <https://yeoman-yarns.co.uk> primarily a mail/internet order business for hand and machine knitting yarns, but with a small shop in their Leicester warehouse available.

Uppingham Yarns: <https://www.wools.co.uk/index.php> hand and machine knitting yarns, spinning and weaving supplies too

Bedford Sewing and Knitting: <https://www.bsk.co.uk> mainly sewing now, but still some machine knitting yarn and spares

FURTHER AFIELD:

Fairfield Yarns: [Heywood, Lancs] <http://www.fairfielddyarns.co.uk/> mainly machine knitting yarn, some equipment

Airedale Yarns [Keighley, Yorks] <https://airedaleyarns.co.uk/index.php/> mainly machine knitting yarn

OTHER FAIRLY LOCAL YARN SHOPS

Get Knitting [Northampton] <https://www.yarnshopnorthampton.co.uk/>

Toft <https://www.toftuk.com/> Alpaca farm/ shop in Dunchurch near Rugby

Wool Warehouse [Leamington Spa] <https://www.woolwarehouse.co.uk/> mainly postal/online, but with a small shop on site

Bella Knit [Corby] <http://www.bellaknit.co.uk/>

Janknits [Wellingborough] <http://www.janknits.co.uk/contact%20us%20.html>

Jools Wools [Finedon] <http://joolswools.co.uk/>

Knit One [Leicester] <http://www.knitone.uk.com/>

The Knitting Company [Leicester] <https://www.facebook.com/knittingcompany>

MACHINE KNITTING PATTERNS

Ann Lavene <http://home-machine-knitting.co.uk/about-anne/>

Marianne Henio <http://heniocreative.com>

REPAIRS AND SERVICE

Richard Jones (ex Brother engineer).Tel: 01386 833339 (after 6pm)Mobile: 07818 033563

Email: richardjones47@btinternet.com Knitting and sewing machine repairs.

SILVER [Rushden] <http://www.silverviscount.co.uk>

OTHER CLUBS

Leicestershire Machine Knitters <http://www.leicestershiremk.org.uk>

Rugby <http://needlesofsteel.blogspot.com/p/warks-mk-notice.html>

Sherborne <http://www.allknitsherberts.co.uk>

Bookham <http://www.bookhamknitclub.org.uk>

Berkshire <http://www.berkshiremachineknittingclub.co.uk>

Yateley <http://yateleymkclub.blogspot.com/>

Fleet <http://fleetknittingclub.blogspot.com/>

Lichfield <https://www.lichfieldmachineknitting.co.uk>