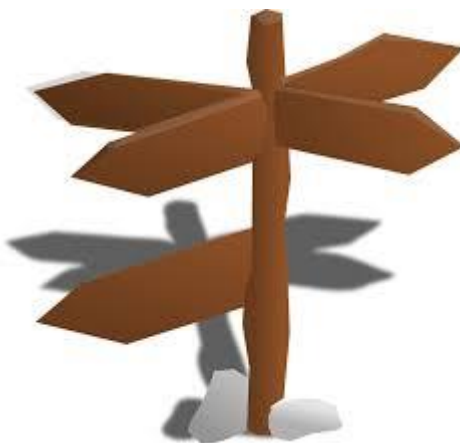
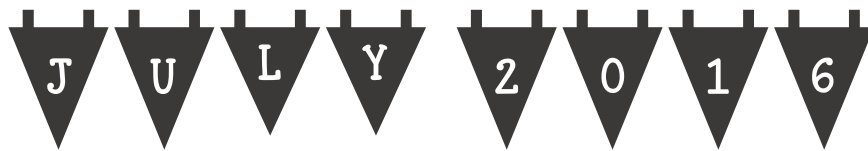


LONG BUCKBY MACHINE KNITTERS



FORTHCOMING EVENTS

CLUB MEETINGS

Today

11th July **CHANGING DIRECTION** Knitting in different ways: sideways, modular as well as shaping using holding position

COMING UP:

8th Aug **STITCHED UP: A VARIETY OF PATTERNS**
Exploring the versatility of automatic pattern capability, as well as a bit of hand manipulation

12th Sept **ACCESSORIES** Knitting accessories

10th Oct **SET IN SLEEVES** on the machine with guest speaker SUE BOOTH

14th Nov **GADGETS** practical session, opportunity to practise with gadgets like colour changer, cast off linker etc.

12th Dec **COMPETITION, DISPLAY AND SALES** End of year celebration

WORKSHOPS



Workshops for 2016 are as follows: [although the workshops have a theme, we can run personalised workshops at the same time e.g. beginners' techniques, software/ computing for knitters, or using specific equipment]

19th Sept	1-4 Doors open at 12.30	<u>WORKSHOP:</u> machines supplied/ booking essential Using the Garter Bar	£15	Booking closes on 12th Sept meeting
-----------------------------	--------------------------------	---	------------	---

All workshops to be booked in advance by non-refundable full payment. Cheques will be cashed at the time of the workshop, and should be made out to Long Buckby Machine Knitters.

OTHER EVENTS

[FIBRE EAST](#)

Amphill, Bedfordshire, MK45 2NU - 30th and 31st July 2016

Saturday 10:00-17:00, Sunday 10:00-16:30

Tickets

Adults £8 per person per day

Two Day Ticket £14 booked in advance. Advance bookings will be available from 1 June 2016

Children 5-16 £3 : Under 5's free

No concessions.

Long Buckby members triumph at the annual Guild of Machine Knitters challenge event!



Pat Banyard-Smith won the Fiskerton Trophy, knitting a child's cardigan based on a pattern supplied by the Guild: pictured left

And Lynn Timmins won both the Alison Lee award, and the Creativity Cup, with her spectacular entry pictured right: it also won the Members' Choice!

Congratulations to them both!



SMALL ADS

FOR SALE

Knitmaster HK160 mid gauge machine. It is in good working condition and comes with all the necessary tools. The manual and the extremely rare Lecle book are also included along with several punched and unpunched cards. I would like £180 but am open to offers.

Marion Rutherford 01234712755



WANTED

Machine Knitters needed!

- ❖ Mhairi MacLachlan (maclachlan.mhairi@gmail.com) 07813 897 528
- ❖ Harrison Winter of HCR knits [<http://www.hcrknits.com/>] Contact: info@hcrknits.com

BUSINESS ADS

❖ Knits 'n' Bits [Long Buckby]

We buy and sell used [serviced] knitting machines and accessories, and also sell books, punchcards, spares and more. Contact Wendy on 01327-842335 or email knitsnbits@live.co.uk. N.B. Response will be a little slower at the moment than usual, but she is still in business.

❖ Elsie's Wool Shop: Ma's Buttons

in Victoria Road, Rushden, just off the high street. They supply wool, all plies, including cones and a large selection of buttons and haberdashery items.

email mcginnelsie@yahoo.com or telephone 01933 380610 evenings or weekends.

PLEASE LET ME HAVE DETAILS OF ANYTHING YOU WOULD LIKE TO ADVERTISE IN THIS SPACE.
SALES AND WANTED – FREE ADVERTISING!

PUZZLES

Directions

RIHGT

10					

LETF

17	14	19		

REIVACLT

23				13			

HOLNIRZATO

16			21		27		7		

SHRIGHTAT

29				8			

NIALOGDA

12							

CERDUV

15					20	

VYAW

3				

DOLMAUR

4						

DOJIEN

26			11			

TEAGRRTISCTH

9						24					

GOCSITKN SIHTTC

6				18				25						

PANTERT

2		22				28		

SYDSAEIW

1								

LYETSGAHNW

5										

1	2

3	4	5

6	7	8	9

10	11

12	13	14	14	15	16	17	18	19	

20	21	22	23	24	25	26	27	28	29					

Unscramble each of the clue words.

Copy the letters in the numbered cells to other cells with the same number.

Answers on last page!

PATTERN

PEACOCK

A crescent shaped shawl, knitted from end to end in tuck lace, with an automatic fringe. The shawl pictured is small, with a 'wingspan' of about 42 inches, but could easily be enlarged, see the instructions below.

MATERIALS:

Example knitted in Artesano hand painted lace, about 30g.

Standard gauge machine, Tension 5.



Punchcard as shown, but could be knitted in any tuck lace, although the needle arrangement would be different. Stitchworld 291 will achieve the same results, but the needle set-up will need to be altered a little: ensuring that the out of work needles are either side of the 'tucking' needle.

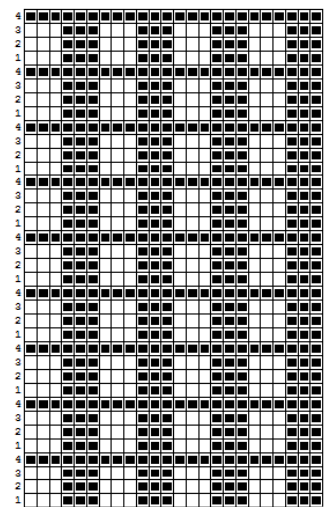
Needle arrangement: [0 is centre of bed]

|||.|.|||0|.|||.|.|||

INSTRUCTIONS

Cast on over R22/23/24 and R53/54. Knit 4 rows, setting the punch card pattern on the 4th row, and then set machine to tuck.

Increase every 4th row at left hand side. You need to be aware of the needle arrangement. The first increase would mean leaving one needle out of work on the left hand side, then bringing the next one into work. The following increase would be the same, then there would be two increases without needles out of work [see needle arrangement above]. Repeat until you have L27 – R24 in work, and there should be a group of three needles to finish. You will need to weight the fringe carefully, and move the weight up regularly. You should also be aware that the stitch on the single needles will tuck in this pattern, so make sure that you bring the needle forward if it is the end stitch, so that it does not. I did this for each increase at the end anyway, and you will need to weight the work well, especially at the edge.



When all needles are in work, set machine to hold. Bring one needle at LH to hold on alternate rows, until all needles are in hold, then push one needle at RH back to work on alternate rows, until all needles are in work again. Repeat twice more.

Decrease every 4th row at left hand side until 3 stitches remain, then cast off.

Finish fringe by knotting together groups of 6 strands. I found it easier to 'undo' them as I went, and cutting the loops at the same time.

Finally, I steam pressed the shawl well. Wet blocking might be better.

For a larger shawl, you could do one, or both, of two things.

1. Work over L39 to R36, with R65/66 as the fringe stitches. Cast on over R34/35/36 then follow instructions above to L39.
2. Increase and decrease at the left hand side every 6th row. This will make a slightly different shape, with longer arms.



Pat knitted the larger version, and you can see the results here:



this one on the right was knitted without the fringe, then given a crochet edge



And Pat wet blocked them both, as in the picture left: [you can borrow blocking mats from the club, if you wish to do so]

KNITTING IN DIFFERENT DIRECTIONS

Our theme today invites us to try knitting sideways, to knit with curves, to knit in a modular fashion, perhaps to dust off the garter bar and change the face of the knitting, in short to experiment!!!

As ever, we can only demonstrate some techniques, but our main aim is to get people started in a different direction, then it is up to our members to create some magic!

SOURCES OF INSPIRATION

<http://www.guagliumi.com/books/hand-knitsbymachine.html> for modular knits on the machine

<http://www.guagliumi.com/pdfs/AlmostSeamlessShrug.pdf> for practising short row shaping

http://www.midwestmachineknitters.org/wp-content/uploads/2014/01/Short-Row-Partial-Knitting_dzk-10-03-2014.pdf for a worksheet on short row shaping

<https://youtu.be/f45K9c2BqHw> for Diana Sullivan showing how to knit shell stitch

<http://adriprints.blogspot.co.uk/2014/03/mk-tutorial-garter-bar.html> for a garter bar tutorial

<https://www.youtube.com/watch?v=laW9c9JGQz8> this video is the first part of a five-part series on knitting fan lace on the machine. If you follow the link, it will also lead you in to the other parts.



This is a cardi by Bill King, shown at a Long Buckby workshop. A 'pattern' of a prototype [rare from Bill, who prefers to provide inspiration for DIY designers] was published in Machine Knitting Monthly in November 2012.

PATTERNS TO BUY

A small selection!

<http://metropolitanmachineknitting.co.uk/shop/books/iris-bishop-designs.html> Iris Bishop's Helix sweater, Evolution jacket and Kaleidoscope shawl all use sideways knitting in an interesting way, and contain good instructions for experimentation

Ann Lavene has an interesting take on sideways

knitting: https://www.etsy.com/shop/HouseofLavene?section_id=11208264

Pat receives her award from Guild Chair
Hazel Green



Answers to puzzle words

right	left	vertical	horizontal	straight
diagonal	curved	wavy	modular	joined
garter stitch	stocking stitch	pattern	sideways	lengthways