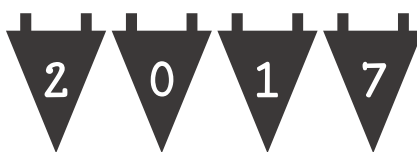
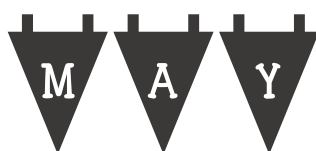


LONG BUCKBY MACHINE KNITTERS



FORTHCOMING EVENTS

CLUB MEETINGS

Today

CUT AND SEW

COMING UP:

12 th June	KNITTING WITH WIRE with Erica Thomson
10 th July	A MULTITUDE OF MACHINES – various makes, gauges, types
14 th Aug	BUTTONHOLES AND OPENINGS
11 th Sep	BUTTONS

- At meetings where we do not have an outside speaker, club members are encouraged to participate: please see Lynda if you would like to demonstrate or show a special technique or item
- Please let us know if you have a special requirement in case of emergency, e.g. a mobility problem which would mean a special arrangement in case of evacuation of the building
- Please also respect the demonstrators and other members, some of whom have hearing impairment, by not talking during the demonstrations.

WORKSHOPS



May 15th **DESIGNING KNITWEAR**

Please could participants meet after today's meeting for a short discussion about what to bring and what you want!

July 17th **BEGINNERS' WORKSHOP** **deadline for booking: June meeting**

This workshop is for practising basic techniques. Participants are invited to submit their requests on booking.

September 18th **BUTTONS** **deadline for booking: August meeting**

This workshop is a practical approach to making buttons from yarn, fibre, textile or polymer clay – maybe more!

ALL WORKSHOPS RUN FROM 1-4 AT LONG BUCKBY COMMUNITY CENTRE. COST £15 TO INCLUDE USE OF EQUIPMENT.

VOLUNTEERS NEEDED

We would like to offer assistance to new and improving machine knitters. If you would like to volunteer as a Knitting Buddy, please let us know, and we can pair learners with buddies, geographically if possible.



OTHER EVENTS

May 13th 2017

Machine Knitting Day at Bedford Arts Centre, Ampthill Road, Bedford MK42 9HE 10 am – 4pm Cost £25.80 For those new to machine knitting or needing a refresher. Run by Sheila Day of Putnoe Heights Knitting Club and Marion Sutton. Call Marion on 01234 217647 for further details Drinks provided bring own lunch. Phone the centre direct to book 01234 266510

17th June 2017: Guild of Machine Knitters National Guild Day with AGM, Westbury, Wiltshire. Our next National Guild Day will take place on Saturday 17th June 2017 at Leigh Park Community Centre, Leigh Park Way, Westbury, Wiltshire, BA13 3FN from 10 am till 4 pm.

It will be combined with the 2017 AGM which will take place at 12 noon for approximately 30 minutes. It will be followed by the presentation of cups and awards.

Speaker: Jan Truman

Displays and demonstrations. Uppingham Yarns

Bring a packed lunch. Tea and coffee will be provided by Westbury Woollies.

Non-members are welcome (guest fee £5).

Knit & Natter at Droitwich Spa, Worcestershire on **Saturday 15th July** Workshops, a few traders and guest speaker Melissa Warren

This is run by Timberdine MKC and Malvern Enthusiastic Machine Knitters in association with GMK Further details next month.

FIBRE-EAST 29/30 JULY 2017

Saturday : 1000 – 1700

Sunday : 1000 – 1630

Redborne School and Community College
Flitwick Road
Ampthill
MK45 2NU

SMALL ADS

FOR SALE



Comprehensive package comprising Brother KH881 Knitting Machine, Instruction Manual, Ribber, Transfer Carriage, Lace Carriage, Intarsia Carriage, Linker, Colour Changer, Hole Punch with Punch Cards and Wool Winder. Also includes Weights, Clamps, Cast On Bars, Carriage extensions, Assorted Wool and Patterns, Table, Swivel Chair, Calcuknit Knitting Calculator, Garter Bar, and Tricot Yarn Brake. Longstanding back problems force sale. £200 ono. Please Contact Lil Greenwood on 01327 439309



Brother Knitting Machine Model KH-891 and KR-850 Ribber in Horn Cabinet including Bench Seat/Storage Box

Accessories and instruction manual, Transfer Carriage and Knit-Leader

All in excellent condition but machine requires new sponge bar

Many extras including:-

Substantial stock of industrial and 4-ply yarn

Machine knitting maintenance book with video tape

Cone winder/Hole punch and punch cards/Work box for accessories

Assorted hardback and paperback "how to" and pattern books

Folder with many "useful hints" and patterns

Price : £275 o.n.o. Please contact Eileen Andrew 01788 822159 or jpandrew@tiscali.co.uk

WANTED

Machine Knitters needed!

❖ Mhairi MacLachlan (maclachlan.mhairi@gmail.com) 07813 897 528

❖ Harrison Winter of HCR knits [<http://www.hcrknits.com/>] Contact: info@hcrknits.com

BUSINESS ADS

❖ Knits 'n' Bits [Long Buckby]

We buy and sell used [serviced] knitting machines and accessories, and also sell books, punchcards, spares and more. Contact Wendy on 01327-842335 or email knitsnbits@live.co.uk. N.B. Response will be a little slower at the moment than usual, but she is still in business.

❖ Elsie's Wool Shop: Ma's Buttons

in Victoria Road, Rushden, just off the high street. They supply wool, all plies, including cones and a large selection of buttons and haberdashery items. email mcginnelsie@yahoo.com or telephone 01933 380610 evenings or weekends.

FOR HIRE

The club has a number of items for hire, on a monthly basis, for a modest fee. These include knitting machines, gadgets and yarn winding equipment. Have a look at the monthly meeting, and speak to Margaret if you are interested.

PLEASE LET ME HAVE DETAILS OF ANYTHING YOU WOULD LIKE TO ADVERTISE IN THIS SPACE. SALES AND WANTED – FREE ADVERTISING!

PUZZLE

CUT AND SEW

Unscramble each of the clue words.

Copy the letters in the numbered cells to other cells with the same number.

LEENED

REDTAH
7

SIRSSCOS
1 12

SAEM
5

TATNRPE
14 3

EGDE

EMH
16

KORLVOEC
2 21

NIKNEELC
4 20

PICEE
11

FARY
19 9

REVLUAN
6

RUSEEC
8

NYAR
18 13

NINKIGTT
10

HINSIF
17 15

1 2 3 4 5 6 7 8 9 10 11

12 13

14 15 16

B
17 18 19 20 21 !

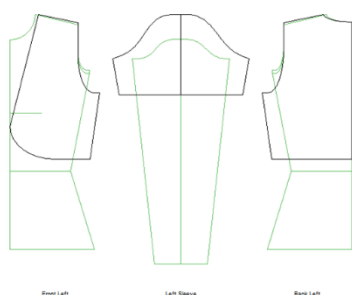
NEW PATTERNS ON WEBSITE

I have started a new section for the LBMK patterns, with pdf downloads for cut and sew or charting devices: they will be in multiple sizes, and in two formats, full and half size, for Brother and Knitmaster.

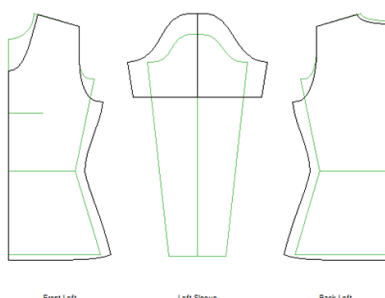
To use them, you will need to print out the appropriate file at 'actual size'. I think this will be automatic, but it is worth checking the printer before printing masses of pages. When you have done this, you will have a number of sheets, with marked crosses where they intersect. I found that the page numbers are annoyingly truncated, but you will be able to piece together the garment pattern fairly easily. I am providing a screen shot of the original pattern to help with visualising this, see below.

The first two patterns available on the site are:

Bolero



Short sleeved top



The idea would be to use these patterns as a starting point. You can add pieces, cut parts off etc.

CUT AND SEW

There are two main ways this technique can be used:

1. To finish off garments which have been mostly made conventionally on the machine, to aid the more 'fiddly' parts, such as a neckline. On our website, under Hints and Tips, is a description of how to enclose a raw neckline edge in a mock rib. I will demonstrate this at the meeting, and consider how to adapt the technique for other edges.
2. To make a complete garment, in dressmaking fashion, using a paper pattern such as the ones above.

CUTTING

Finish and steam your fabric before starting. Lay it out flat and place pattern pieces appropriately, i.e. with the grain running the right way [or the knit direction in this case].

I find it easier to cut any fabric when I use weights to hold the pattern pieces rather than pins. You can use purpose made ones, or items you have at home. Ribber weights are ideal! Or I have used pennies sellotaped together in stacks, or even food cans.

You can then mark your fabric, if you wish, prior to cutting. I do not do this, but have heard you could use a weak solution of e.g. cornflour to mark the lines [which will then wash out later], or a marker pen or even stitching, but, having tried that once, I think it is a bit awkward. If you mark the fabric, you can then use a sewing machine to sew round the lines to prevent fraying, before you cut.

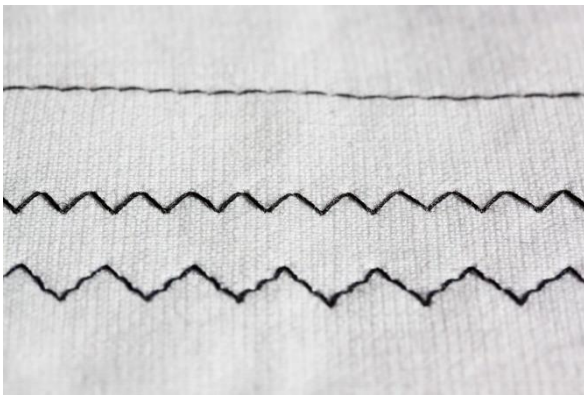
I use really sharp dressmaking scissors to cut: you can use a rotary cutter, if you have one, but whatever you use must be sharp, or you will be pulling at the fabric and risk it fraying.

I would then overlock the edges as soon as possible, or use a sewing machine with a zigzag stitch.

SEWING

It is best to sew seams in cut and sew with the sewing machine. If you use an overlocker, which is tempting, the seams will not be as robust or stable.

There is a short account of sewing here <http://www.burdastyle.com/blog/sewing-technique-working-with-sweater-knits> and here is a picture of appropriate stitches to use



The straight stitch is fine if you can align it with the knitting direction, so it is not overstretched.

Otherwise use a zigzag stitch

Or, for stitching overlapping pieces of fabric, use this stitch, sometimes called a serpentine stitch, which is found on most modern machines, is very stable and flexible. If you set it at a narrow width and a longish stitch length it will curve more.

Other information can be found at

<http://www.tillyandthebuttons.com/2014/02/sewing-knit-fabric-on-regular-sewing.html>

<http://www.craftingfashion.com/>

And there are many more websites with information, because sewing with knitted fabric is now very easy. The fabric is available, and sewing machines have improved.

But we can make our own fabric!

AND ONE MORE TIP! Visit <http://www.theknittingschool.com/> and register for the newsletter, it is really good, and free. You can see extracts on the site, but the registered one is much longer.

Newsletter of Long Buckby Machine Knitters ©2017 www.longbuckbymk.com

PUZZLE ANSWERS

Words for puzzle

needle	thread	scissors	seam
pattern	edge	hem	overlock
neckline	piece	fray	unravel
secure	yarn	knitting	finish

Phrase

Concentrate on the fabric!