

## Penny's Lace Tailed Crossover Scarf

This is my interpretation of an old hand knit scarf that had a Leaf-shaped Lace Tail. As I am not a hand knitter, I have interpreted the lace as best as I can whilst transferring the outermost stitches to the outside edge to prevent rolling. This results in a scalloped but squarer bottom edge and no longer resembles a leaf shape. In the original the crossover loop is done in rib, I have used a Tuck Stitch at a tight tension.

I have worked the pattern so it can be made on a fairly basic machine by using Hand Selection & Tooling.

Tension - 4Ply (at T8) Tension assumed as 28 st and 36 Rows to 10cm (4in)

**Scarf Neck Section** - can be done in one section or two if preferred.

Cast on using waste yarn 41 st, knit 8 - 10 rows

Using Nylon Cord Knit 1 row

Using **Main Yarn** at **Main Tension**, Knit **140** rows (knit 130 to 150 rows if you want a tighter or looser fit)

Using Nylon Cord Knit 1 row

Using waste yarn knit 8 - 10 rows, Take off the machine

### Back Loop Section

Cast on using waste yarn 21 st, knit 8 - 10 rows, Using Nylon Cord Knit 1 row

Change to Main Yarn,

If using Punchcard or Electronic patterning set for 1<sup>st</sup> row of 1x1 alternating (birds eye) (preselect)

Set **Change Knob** to KC II (electronic) or KC (Punchcard)

Using **Main Yarn** at **MT** Knit 1 row

Set to Tuck in both directions **with end needles patterning**.

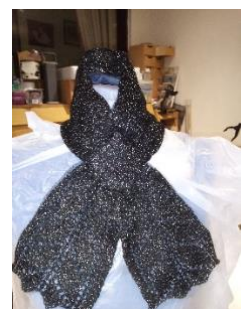
**MT-5**, Knit 48 rows,

Knit 1 row plain at **MT**

50 rows in total

Using Nylon Cord Knit 1 row, Using waste yarn knit 8 - 10 rows,

Take off the machine





If Hand tooling use 1x1 comb to bring alternate needles to upper working position, alternate needles each row, set for tuck.

**Lace Tail Sections** - Knit 2, attach Back Loop section on 1<sup>st</sup> tail only



Cast on using waste yarn 41 st, knit 8 - 10 rows

Using Nylon Cord Knit 1 row, position **carriage at left**

**Latch Tool Cast on from Right to Left** with Main Yarn,

Using Main Yarn at **MT**, Knit 1 row from left to right

Set **RC to 000**

If using a cast on comb, replace with 2 or 3 small weights.

Follow the 12 row Lace Transfer Pattern at the end of the pattern 4 times (48 rows) using transfer tools

Decrease 41 st to 21, either using a garter bar or use a nylon cord and waste yarn to remove from machine. Rehang with purl side facing with 2 stitches on each needle. **RC 048**

**\*\*\*1st side only - Loop Side**

With the Purl side facing you hang the stitches from the 1<sup>st</sup> main yarn row from the bottom end of the Back Loop Section. Needles should now have 3 stitches each **\*\*\***

Push all needles to hold - ensure held stitches will knit back.

### **Front Loop Section or Thread Through Section**

If using Punchcard or Electronic patterning set for 1<sup>st</sup> row of 1x1 alternating (birds eye) (preselect)

Set Change Knob to KC II (electronic) or KC (Punchcard, set so end needles are patterning)

**Set RC 000**, Using **Main Yarn** at **MT** Knit 1 row

Set to Tuck in both directions.

**MT-5**, Knit 48 rows, **RC 049**

Knit 1 row plain at **MT**

50 rows in total

### **\*\*\*1st side only - Loop Side**

With the Knit side facing you hang the stitches from the last main yarn row from the top end of the Back Loop Section. Needles should now have 2 stitches each \*\*\*

Knit 1 row at **MT**

### **Joining Lacy Tail with crossover to Neck Section**

You now need to remove the work in order to join the Tail Section to the Neck Section. Or you can join by Hand off the machine

Option 1 - Lift the knitting off the machine using a garter bar, keep to one side, you are going to rehang with purl side facing you as it was.

Option 2 - Using Nylon Cord Knit 1 row, Using waste yarn knit 8 - 10 rows, Take off the machine.

### ***Hang the Neck Section***

For the **Loop** side pick up the stitches from the 1<sup>st</sup> row (bottom) of the neck section. For the **non-loop** side pick up the stitches from the last row (top) of the neck section.

With the Knit side facing you, hang the stitches from the neck section onto 21 needles with 2 stitches per needle, push the needles forward so the stitches are behind the latches. Remove any nylon cords or waste yarn. Place a weight on the knitting. Knit sides of both pieces of knitting are facing together.

### **Rehang Tail Section**

With the purl side facing you rehang the stitches from the tail/crossover section back onto the same 21 needles with the loops in the hooks of the needles. Remove any nylon cords or waste yarn. Place a weight on the knitting.

Pull the needles back so the tail section loops pull through the Neck section loops.

Cast off the stitches.

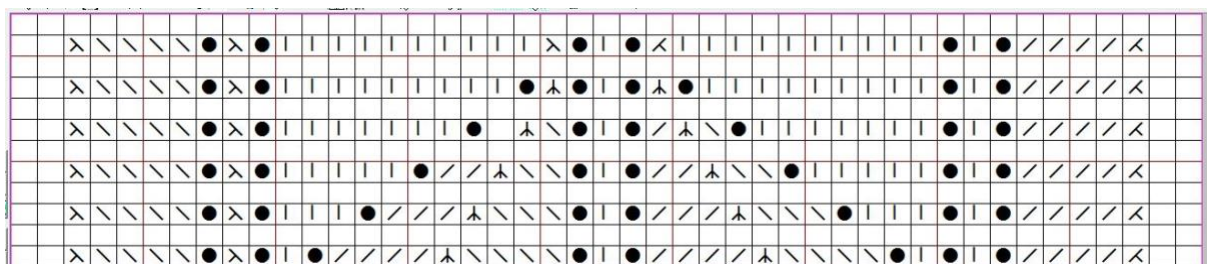
Repeat for 2<sup>nd</sup> Tail Section excluding attaching the Back loop

To knit on the Lk150 using Double Knitting Yarn.

Reduce the number of rows in the Neck section by approx. 20 rows.

You can keep the stitches to 41 & 21 or remove 1 (or 2) stitches from both outer edges. This will mean doing only 4 (or 3) stitch transfers on the outer edges of the lace pattern instead of 5. Use Hand selection with a 1 x 1 comb for the tuck section but still reduce the tension.

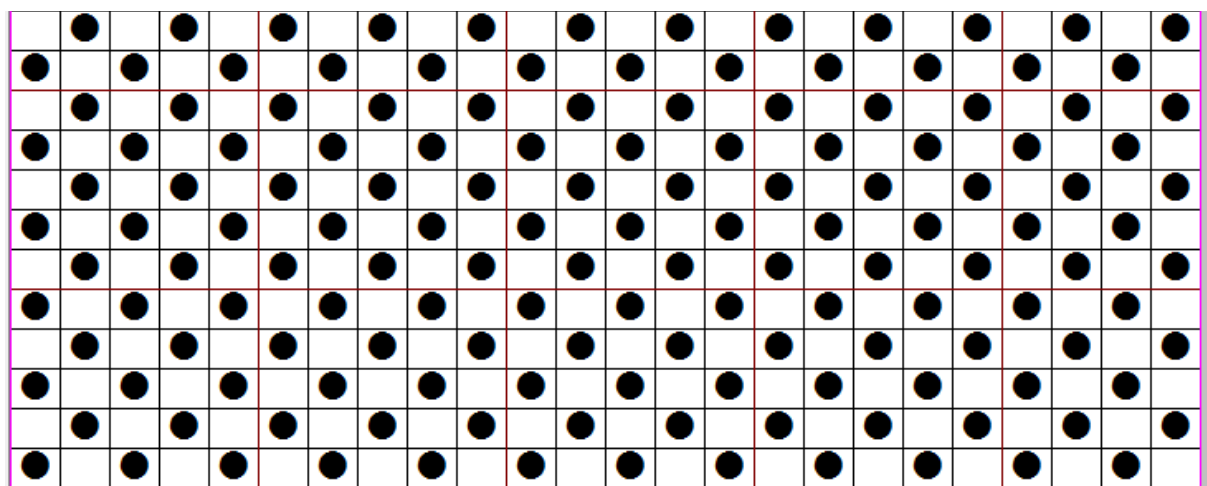
**Lace Pattern** - for Hand Tooling, NOT for use with Lace Carriage



Symbols

| Knit, Hole □, Tr-L □, Tr-R □, Dec-R □, Dec-L □ Dbldec 

**Birds Eye Pattern for Loop Sections**



● – Hole in Punchcard or Needle selected to upper working position for tuck stitch.