

# Long Buckby Machine Knitters

## Newsletter



## August 2024

## From the Editor



Welcome to our August newsletter.

Our meeting this month is about combining crafts, so please bring anything made with multiple crafts - e.g. crochet, hand knitting, spinning, weaving etc.

I am sure we will have lots to talk about and show.

|                           |
|---------------------------|
| <b>Advance Notice!!!!</b> |
|---------------------------|

Following the May meeting, we have decided to have a sideways knitting show and tell in October [our next forum meeting]. You can either bring something you have knitted already or make something before then. [you will be welcome without anything to show and tell, but it is nice to have a challenge!]

We would also like to announce our December prize exhibition challenge for this year, which was an idea inspired by our April meeting. The challenge is to create a project starting from a photo or idea from the environment [which includes just about anything!].

Lynda  
[and Pat]

### Contacts:

**Lynda** [administrator@longbuckbymk.com](mailto:administrator@longbuckbymk.com)

**Pat** [chairman@longbuckbymk.com](mailto:chairman@longbuckbymk.com)

## Calendar 2024

|                                   |   |
|-----------------------------------|---|
| <b>LBMK<br/>calendar<br/>2024</b> | <p>All meetings are from 2pm to 4pm, and doors are open from 1.30pm.</p> <p>Membership fee: annual £5, plus £3 for most meetings, £5 for those with visiting speaker [marked with ***]</p> <p>Guest fees: £5 most meetings, £7 for those with visiting speaker.</p> <p>Tea/coffee and biscuits included</p> |
| <b>Date [all<br/>Mon]</b>         | <b>Topic</b>  |
| <b>8th Jan</b>                    | <b>Knitting in different directions</b>   |
| <b>12<sup>th</sup> Feb</b>        | <b>Machine Knitting Forum – a chance to catch up on skills and friends!</b>   |
| <b>11th<br/>March***</b>          | <b>Neil Collison – knitting machine maintenance ****</b>  |
| <b>8th April</b>                  | <b>Inspiration from the environment</b>   |
| <b>13th May</b>                   | <b>Machine Knitting Forum – a chance to catch up on skills and friends!</b>   |
| <b>10th<br/>June***</b>           | <b>Erica Thomson – sewing machines for machine knitters</b>   |
| <b>8th July</b>                   | <b>Yarn technology</b>  |
| <b>12th Aug</b>                   | <b>Combining crafts</b>   |
| <b>9th Sept<br/>***</b>           | <b>Claire Newberry – combining stitches</b>   |
| <b>14<sup>th</sup> Oct</b>        | <b>Machine Knitting Forum – a chance to catch up on skills and friends</b>  |
| <b>11th Nov</b>                   | <b>Adapting hand knitting patterns for the knitting machine</b>   |
| <b>9th Dec</b>                    | <b>AGM/ COMPETITION, DISPLAY AND SALES.      End of year celebration</b>  |

## Last Month

We looked at yarns in detail, thought about fibres and sustainability, and shared lots of projects.

It was a very busy meeting, with everybody sharing projects, views and knowledge - perfect!

## August Meeting

### Combining Crafts

We are a club for machine knitting, but most members have other interests in craft: we have hand knitters, crocheters, spinners, weavers, sewists and card makers etc.

Some suggestions for combining these with machine knitting - not an exclusive list:

### Crochet

I use crochet very often to edge, and sometimes join, my knitting. The more adventurous might use it as a larger component of a garment and mix both crafts into one garment in a more equal way.

### Hand Knitting

Again, can be used for edging. I have also recently found that it is good for joining - picking up equal numbers of stitches on armhole and sleeve head, then casting them off together to make a straight and stable seam. I have also used it to make pockets [most of our crafts can be used for this] and other additional features.

And I am a diehard hand knitter, including taking pieces off the machine to cast off or edge. In the past I have also used machine knitting for the long, boring bits of a garment [mostly baby clothes] and hand knitting for the more complex elements.

### Spinning

Hand spun yarn can be used as machine knitting yarn. It needs to be stable and preferably smooth, and/or care needs to be taken [none of my high-speed knitting].

An easier use is with knit weave - artistic effects abound!

©Long Buckby Machine Knitters, 2024 [Long Buckby Machine Knitters](https://longbuckbymk.com)  
([longbuckbymk.com](https://longbuckbymk.com))

## Weaving

Not knit weave, which is obviously a machine knitting thing, but handwoven fabric can be used as edgings, pockets, cuffs and collars.

## Sewing

An obvious combination is cut and sew, which I am increasingly exploring. But there are also opportunities to use a sewing machine in seaming [Erica Thomson did a wonderful demonstration in June] and embellishing [she will be returning for this next June!]

Additionally, thin strips of machine knitting can be used instead of bias binding, and, likewise, strips of fabric might be used as edgings for knitting.

I have never tried it but could imagine thin strips of fabric in knit weave.

## Card Making

If you like making greetings card, how about using small pieces of machine knitting as the 'picture' on the front of a card.

## Multimedia Design

Much more adventurous is to plan pieces made with many different craft techniques.

See some on this Pinterest board [Mixed Media Clothing](#) [courtesy of Susan Lazear]

## OTHER EVENTS



## Pattern

This is an alternative to the Cascade cardigan I knitted during lockdown. I think I have improved the instructions!

### SIDEWAYS SWING

This cardigan is knit sideways, starting at the right front and ending at the left front.

Yarn used: any 4ply yarn, T8 standard gauge, 30 sts/42 rows to 10cm/4 inches [do not worry too much about tension]

The fronts are made up of 4 panels, the back of 9 panels, and there are side panels between front and back.



#### Main Panel

Knit 8 rows

Set carriage to hold. Put all needles on the right of R50 in hold. \*Knit to right, put 1 more needle in hold, knit to left, put 14 needles in hold. \* Repeat from \* to \* until nearly all needles are in hold. Cancel hold.

Knit 8 rows.

#### Side Panel

Cast off the following numbers of stitches at the RH side.

[But see note below]

| size           | 10 | 12 | 14 | 16 | 18 | 20 | 22 |
|----------------|----|----|----|----|----|----|----|
| No of stitches | 20 | 22 | 25 | 27 | 29 | 31 | 33 |

Knit 2 rows.

\*Cast off further 10 stitches and knit 2 rows. \* Repeat from \* to \* twice. [total decrease = stitches from table + 30]

Knit 8 rows.

Cast on as you have just cast off i.e. 3 x 10 stitches with 2 rows in between and then one cast on as the table above suggests.

Knit 4 rows. COL

**Alternative way is to set carriage to hold and, instead of casting off, put needles into hold, then take off on waste yarn when all cast off rows have been executed. Then the cast on stitches will be cast on in total on waste yarn, and needles put into hold, returning them to working position in 4 stages as the above instructions. You will have to bear the body stitches in mind as you are doing this! You then have live stitches which you can later use to hand knit/join the armhole/sleeves.**

## Instructions

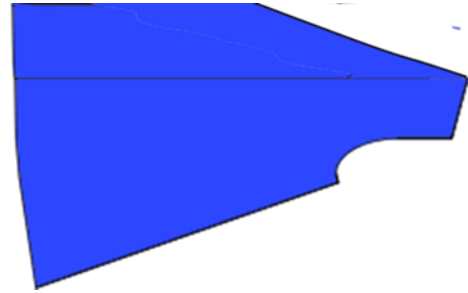
MT throughout.

Cast on 200 stitches. Carriage on left [COL] and set to hold.

### LEFT FRONT

At right hand side put 50 needles into holding position.

Knit 2 main panels, with the following amendment - rows as follows:



#### Panel 1

1. Knit to right, put 1 needle at right into hold [needles in hold - NIH -51]
2. Knit to left, return 4 needles at right to work [NIH - 47]
3. As row 1 [ NIH - 48]
4. As row 2 [NIH - 44]
5. As row 1 [NIH - 45]
6. As row 2 [NIH - 41]
7. As row 1 [NIH - 42]
8. As row 2 [NIH - 38]

Row 9 and following: Put all needles on the right of R50 in hold. \*Knit to right, put 1 more needle in hold, knit to left, put 14 needles in hold. \* Repeat from \* to \* until nearly all needles are in hold. Then knit to left, return all needles left of R37 to working position.

Knit 8 rows as follows:

1. Knit to right, put 1 needle at right into hold [needles in hold - NIH -38]
2. Knit to left, return 4 needles at right to work [NIH - 34]
3. As row 1 [ NIH - 35]
4. As row 2 [NIH - 31]
5. As row 1 [NIH - 32]
6. As row 2 [NIH - 28]
7. As row 1 [NIH - 29]
8. As row 2 [NIH - 25]

#### Panel 2

1. Knit to right, put 1 needle at right into hold [needles in hold - NIH -26]
2. Knit to left, return 4 needles at right to work [NIH - 22]
3. As row 1 [ NIH - 23]
4. As row 2 [NIH - 19]



5. As row 1 [NIH - 20]
6. As row 2 [NIH - 16]
7. As row 1 [NIH - 17]
8. As row 2 [NIH - 13]

Row 9 and following: Put all needles on the right of R50 in hold. \*Knit to right, put 1 more needle in hold, knit to left, put 14 needles in hold. \* Repeat from \* to \* until nearly all needles are in hold. Then knit to left, return all needles left of R12 to working position.

Knit 8 rows as follows:

1. Knit to right, put 1 needle at right into hold [needles in hold - NIH -13]
2. Knit to left, return 4 needles at right to work [NIH - 9]
3. As row 1 [ NIH - 10]
4. As row 2 [NIH - 6]
5. As row 1 [NIH - 7]
6. As row 2 [NIH - 3]
7. As row 1 [NIH - 4]
8. As row 2 [NIH - 0]

Now knit 2 main panels

## SIDE [LEFT]

Knit a side panel

## BACK

Knit 4 main panels.

Knit one centre panel

### Centre Panel

Knit the following number of rows straight

| size       | 10 | 12 | 14 | 16 | 18 | 20 | 22 |
|------------|----|----|----|----|----|----|----|
| No of rows | 8  | 12 | 16 | 20 | 24 | 26 | 28 |

Knit 4 main panels.

## SIDE [RIGHT]

Knit one side panel

## RIGHT FRONT

Knit 2 main panels.

Knit 2 more panels as follows – put carriage to hold

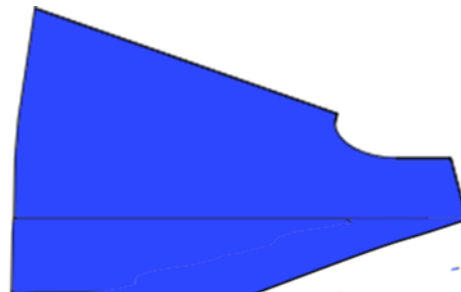
Panel1

1. Knit to right, put 1 needle at right into hold [needles in hold – NIH 1]
2. Knit to left, put 2 needles at right into [NIH – 3]
3. As row 1 [ NIH – 4]
4. As row 2 [NIH – 6]
5. As row 1 [NIH – 7]
6. As row 2 [NIH – 9]
7. As row 1 [NIH – 10]
8. As row 2 [NIH – 12]

Row 9 and following: Put all needles on the right of R50 in hold. \*Knit to right, put 1 more needle in hold, knit to left, put 14 needles in hold. \* Repeat from \* to \* until nearly all needles are in hold. Then knit to left, return all needles left of R87 to working position.

Knit 8 rows as follows:

1. Knit to right, put 1 needle at right into hold [needles in hold – NIH – 13]
2. Knit to left, put 2 needles at right to hold [NIH 15]
3. As row 1 [ NIH – 16]
4. As row 2 [NIH – 18]
5. As row 1 [NIH – 19]
6. As row 2 [NIH – 21]
7. As row 1 [NIH – 22]
8. As row 2 [NIH – 24]



Panel 2

1. Knit to right, put 1 needle at right into hold [needles in hold – NIH – 25]
2. Knit to left, put 2 needles at right into hold [NIH – 27]

3. As row 1 [ NIH - 28]
4. As row 2 [NIH - 30]
5. As row 1 [NIH - 31]
6. As row 2 [NIH - 33]
7. As row 1 [NIH - 34]
8. As row 2 [NIH - 36]

Row 9 and following: Put all needles on the right of R50 in hold. \*Knit to right, put 1 more needle in hold, knit to left, put 14 needles in hold. \* Repeat from \* to \* until nearly all needles are in hold. Then knit to left, return all needles left of R64 to working position.

Knit 8 rows as follows:

1. Knit to right, put 1 needle at right into hold [needles in hold - NIH - 37]
2. Knit to left, put 2 needles at right into hold [NIH - 39]
3. As row 1 [ NIH - 40]
4. As row 2 [NIH - 42]
5. As row 1 [NIH - 43]
6. As row 2 [NIH - 45]
7. As row 1 [NIH - 46]
8. As row 2 [NIH - 48]

Cancel hold. Knit 2 rows and cast off loosely.

## SLEEVES

Knit the sleeves as follows, according to size. There is no cuff included. It is easier if you do the sleeve head decreases in fully fashioned mode [take outermost 3 stitches off needles with 3 pronged tool, and move them all in by one needle, so that the third needle from the end now has two stitches on it]



### 10

1. Cast on 60 sts in MY, using TD7, Stocking stitch and closed edge method.
2. Inc 1 st at each end of every 10th row 12 times, then every 11th row 4 times to 92 sts (164 rows total).
3. Work even to total 174 rows. COR.
4. Shape cap. Cast off 7 sts at beg of next two rows (78 sts rem). Dec 1 st at each end of every 2nd row 9 times, then dec 1 st at each end of every 3rd row 6 times, then dec 1 st at each end of every 2nd row 9 times. Total 230 rows. COR. Cast off remaining 30 sts loosely.

### 12

1. Cast on 62 sts in MY, using TD7, Stocking stitch and closed edge method.
2. Inc 1 st at each end of every 9th row 3 times, then every 10th row 14 times to 96 sts (167 rows total).
3. Work even to total 176 rows. COR.
4. Shape cap. Cast off 7 sts at beg of next two rows (82 sts rem). Dec 1 st at each end of every 2nd row 11 times, then dec 1 st at each end of every 3rd row 4 times, then dec 1 st at each end of every 2nd row 11 times. Total 234 rows. COR. Cast off remaining 30 sts loosely.

### 14

1. Cast on 62 sts in MY, using TD7, Stocking stitch and closed edge method.
2. Inc 1 st at each end of every 8th row once, then every 9th row 18 times to 100 sts (170 rows total).
3. Work even to total 178 rows. COR.
4. Shape cap. Cast off 8 sts at beg of next two rows (84 sts rem). Dec 1 st at each end of every 2nd row 12 times, then dec 1 st at each end of every 3rd row 4 times, then dec 1 st at each end of every 2nd row 11 times. Total 238 rows. COR. Cast off remaining 30 sts loosely.

### 16

1. Cast on 64 sts in MY, using TD7, Stocking stitch and closed edge method.
2. Inc 1 st at each end of every 8th row 17 times, then every 9th row 4 times to 106 sts (172 rows total).
3. Work even to total 180 rows. COR.

4. Shape cap. Cast off 8 sts at beg of next two rows (90 sts rem). Dec 1 st at each end of every 2nd row 14 times, then dec 1 st at each end of every 3rd row twice, then dec 1 st at each end of every 2nd row 13 times. Total 242 rows. COR. Cast off remaining 32 sts loosely.

## 18

1. Cast on 66 sts in MY, using TD7, Stocking stitch and closed edge method.  
2. Inc 1 st at each end of every 7th row 3 times, then every 8th row 19 times to 110 sts (173 rows total).  
3. Work even to total 180 rows. COR.  
4. Shape cap. Cast off 9 sts at beg of next two rows (92 sts rem). Work 60 rows, while dec 1 st at each end of every 2nd row. Total 242 rows. COR. Cast off remaining 32 sts loosely.

## 20

1. Cast on 68 sts in MY, using TD7, Stocking stitch and closed edge method.  
2. Inc 1 st at each end of every 7th row 3 times, then every 8th row 19 times to 112 sts (173 rows total).  
3. Work even to total 180 rows. COR.  
4. Shape cap. Cast off 9 sts at beg of next two rows (94 sts rem). Dec 1 st at each end of every 2nd row 14 times, then dec 1 st at each end of every 3rd row twice, then dec 1 st at each end of every 2nd row 14 times. Total 244 rows. COR. Cast off remaining 34 sts loosely.

## 22

1. Cast on 68 sts in MY, using TD7, Stocking stitch and closed edge method.  
2. Inc 1 st at each end of every 7th row 19 times, then every 8th row 5 times to 116 sts (173 rows total).  
3. Work even to total 180 rows. COR.  
4. Shape cap. Cast off 9 sts at beg of next two rows (98 sts rem). Work 64 rows, while dec 1 st at each end of every 2nd row. Total 246 rows. COR. Cast off remaining 34 sts loosely.

## MAKING UP

You need to join the shoulder seams, then attach the sleeves, which need to be seamed first. Joining would work best if you either:

Pick up stitches with a circular knitting needle on both the sleeve head and the armhole [you can adjust the number of stitches picked up at the armhole to match the sleeve head], then cast off these two sets of stitches together [by hand]

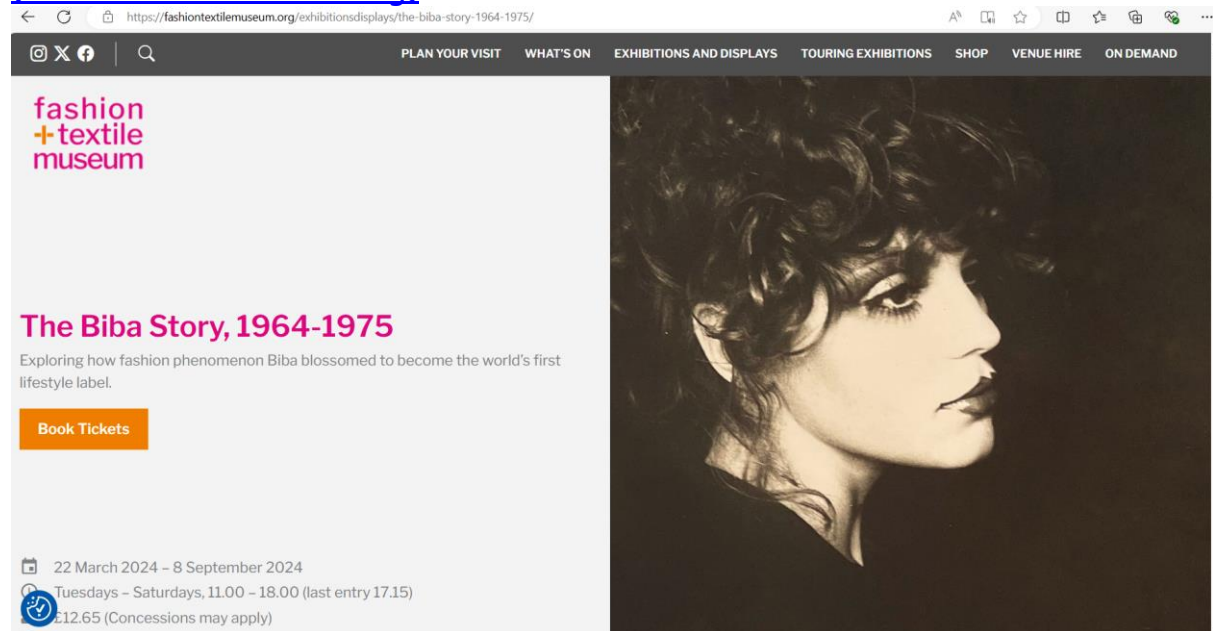
OR

Double crochet round armhole and sleeve head, then double crochet together. BECAUSE stitching together is quite difficult to do neatly!  
Finish edges with double crochet or icord.

## OFF TOPIC

I visited this exhibition recently and had a wonderful trip down memory lane - my time as a teenager. If anyone is interested it is still on until September 8<sup>th</sup>.

[The Biba Story, 1964-1975 - Fashion and Textile Museum](https://fashiontextilemuseum.org/exhibitionsdisplays/the-biba-story-1964-1975/)  
([fashiontextilemuseum.org](https://fashiontextilemuseum.org))



## For Sale

|   |              |      |
|---|--------------|------|
| Brother Electroknit Machine   | KH965        | £500 |
| Ribbing attachment  | KR850        | £300 |
| Knitleader  | <u>KL116</u> | £30  |
| Colour Changer  | KHC820A      | £40  |
| Intarsia carriage   | KA8210       | £40  |
| Linker  | KA8310       | £50  |
| Knitting machine table (collapsible)  |              | £20  |
| Assorted ribber weights and accessories   |              | £10  |
| Instruction Books   |              |      |
| Video instructions for electronic machine   |              |      |
| Hague Linker  |              |      |
| I would be pleased to accept any reasonable offers for the above if anyone is interested. |              |      |
| Barbara Rose  |              |      |
| fibrose@live.co.uk  |              |      |
| 07534104444   |              |      |

©Long Buckby Machine Knitters, 2024 [Long Buckby Machine Knitters](https://longbuckbymk.com)  
([longbuckbymk.com](https://longbuckbymk.com))



## Suppliers

[www.wools.co.uk](http://www.wools.co.uk) - Uppingham Yarns

<https://yeoman-yarns.co.uk/> Yeoman Yarns

<https://www.yarnoncone.co.uk> Yarn on Cone

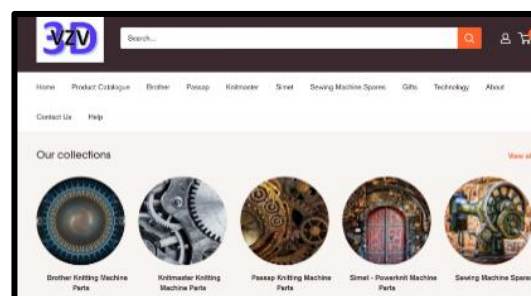
<https://woolyknit.com> Woolyknit

and this one deals in recycled fibres

<https://www.iinouiiio.com/>

For 3d printed parts try <https://vzv3d.com/>

[Buttons - High Quality Buttons For Sale - Totally Buttons](#)



## Other information

Sally Butcher has a [Kalamunda Crafts](#) page on Facebook. Sally is an inspiring machine knitter, with lots of ideas and videos to keep you busy! And find her on <https://www.youtube.com/channel/UCSDxy6pQHAs4gd5XBztYWmw> Well done, Sally, a marvellous resource.

Claire Newberry is also fantastic - [Claire Newberry's Knitting School | creating knitting machine, DAK9 tutorials & patterns | Patreon](#) for DAK tutorials, and [Claire Newberry - YouTube](#)

<http://handymachineknitting.libsyn.com> is a regular podcast

<http://knitwords.blogspot.com/> is a blog

[www.twam.uk](http://www.twam.uk) is a good place to offload unwanted yarn, machines and accessories - they will send them to Africa to help people start up small businesses. Local centre in Rugby.

## And Finally

I would like to involve others in this newsletter, so please let me know of anything I can include

[administrator@longbuckbymk.com](mailto:administrator@longbuckbymk.com) please include LBMK in the subject