

Long Buckby Machine Knitters



Newsletter

November 2025

From the Editor



Welcome to November!!

Sad news this time, as Kathy's mother, Jayne died recently from the aftermath of a fall. We will miss her, a valued member and willing assistant to Kathy. Our thoughts are with Kathy.

This month's meeting is a forum meeting, and there will be a show and tell, and demonstrations, including wire knitting, overlocking and, possibly, garter carriage. We will repeat demonstrations on request at future forum meetings.

Last month we met to finalise next year's calendar, and this is outlined below.

Next month we have our annual celebration, which includes an exhibition of show and tell items, which can also be entered in our annual challenge trophy competition - the winner to be decided upon by members. So please bring items you have machine knitted [eligible for the trophy] or other craft items you wish to share.

The community centre now has a policy of keeping the doors locked, and has a doorbell at the entrance for users to alert the group inside so that they can let people in. Our meetings take place in the Upper Hall, and there is a doorbell labelled as such, on left side of the door.

You can also use a code to enter during the times we have booked the centre only. If you have not got the code, ask us for it.

They also ask for your care as you leave, as the white button operates the door, but the emergency exit button is also there, which you should not use.

And the centre also requests that you do not park in the doctor's surgery car park [I doubt anyone does, but mention it anyway].

Lynda
[and Pat]

Contacts:

Lynda administrator@longbuckbymk.com

Pat chairman@longbuckbymk.com

©Long Buckby Machine Knitters, 2025 [Long Buckby Machine Knitters \(longbuckbymk.com\)](http://Long Buckby Machine Knitters (longbuckbymk.com))

Calendar 2026

LBMK calendar 2026	<p>All meetings are from 2pm to 4pm, and doors are open from 1.30pm.</p> <p>Membership fee: annual £5, plus £3 for most meetings, £5 for those with visiting speaker [marked with ***]</p> <p>Guest fees: £5 most meetings, £7 for those with visiting speaker.</p> <p>Tea/coffee and biscuits included</p>
Date [all Mon]	Topic
12th Jan	Back to basics – casting on and off and using tools
9th Feb	Forum – accessories [including embellishment/overlocking/crochet/fringing, cord winding etc.
9th March***	Servicing and Maintenance - John
13th April	10.00-13.00 overlocker workshop
13th April	Back to basics – finishing – seams, shoulders, kitchener stitch
11th May	Forum – circular yokes
8th June	Lace
13th July	Back to basics – bands, buttonholes and pockets
10th Aug	Forum -sideways knitting
14th Sept ***	Claire Newberry – ribber – basics/set up/circular knitting/different ribs/ fisherman’s rib/racking/ increasing and decreasing/ double jacquard
12th Oct	Back to basics – stitch formation [and fixing errors] /knitweave
9th Nov	Forum – socks and gloves
14th Dec	Annual celebration

Last Month

We discussed the calendar for next year [as above].

Pat and I reported back on our attendance at the Knitting and Crochet Guild annual Convention in September. There was a lot of interest in attending the 2026 event, which will be held at the beginning of September. We will post details at a later date. Meanwhile, KCG have information on membership and the convention on their website [Knitting & Crochet Guild - Knitting & Crochet Guild](#)

Then we talked about patterns generally, and Lola presented us with demonstration of using measurement of existing knitwear to make a pattern.

I showed my two HK projects which could possibly be translated to MK: a sideways knit cardigan and a scarf based on the shawl pattern here <http://garnomera.wordpress.com/2013/03/10/pyttipanna-in-english/>

I was asked to provide patterns, and the cardigan outline pattern is below - I have detailed the methodology for producing a pattern, which should allow for different yarns and tensions, rather than trying to make a pattern for one yarn and many sizes.



The scarf pattern is also below, a hand knit one - still working on machine knitting! I used a lace pattern from this book, which I think is out of print, but still obtainable from Amazon/Abe books etc.

I recommend it for those who wish to have a collection of Shetland lace patterns.

November Meeting

As usual in forum meetings, we will have discussion, show and tell and demonstrations.

Suppliers

www.wools.co.uk - Uppingham Yarns -

<https://yeoman-yarns.co.uk/> Yeoman Yarns

<https://www.yarnoncone.co.uk> Yarn on Cone

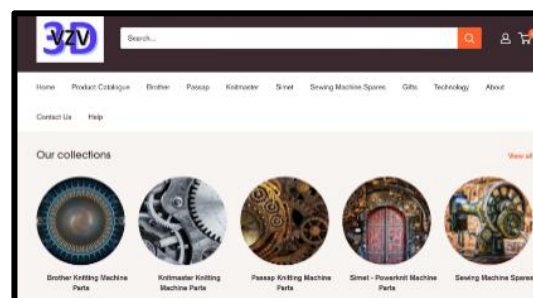
<https://woolyknit.com> Woolyknit

and this one deals in recycled fibres

<https://www.iinouiiio.com/>

For 3d printed parts try <https://vzv3d.com/>

[Buttons - High Quality Buttons For Sale - Totally Buttons](#)



Other information

Sally Butcher has a [Kalamunda Crafts](#) page on Facebook. Sally is an inspiring machine knitter, with lots of ideas and videos to keep you busy! And find her on

<https://www.youtube.com/channel/UCSDxy6pQHAs4gd5XBztYWmw>

Well done, Sally, a marvellous resource.

Claire Newberry is also fantastic - [Claire Newberry's Knitting School | creating knitting machine, DAK9 tutorials & patterns | Patreon](#) for DAK tutorials, and [Claire Newberry - YouTube](#)

Repairs by Neil Collison [Knitting Machine Repairs](#)

www.twam.uk is a good place to offload unwanted yarn, machines and accessories - they will send them to Africa to help people start up small businesses. Local centre in Rugby.



KNITTING &
CROCHET GUILD

The Knitting and Crochet Guild is also a good source of information and much more:

www.kcguild.org.uk

And Finally

I would like to involve others in this newsletter, so please let me know of anything I can include

administrator@longbuckbymk.com please include LBMK in the subject

©Long Buckby Machine Knitters, 2025 [Long Buckby Machine Knitters \(longbuckbymk.com\)](http://Long Buckby Machine Knitters (longbuckbymk.com))

Outline pattern for sideways knit cardigan

I have included the calculations I made for my cardigan.

I have included the instructions for making my cardigan below, and it would be easy to modify this for any gauge or size.

I include Knitware instructions for my sleeve, but any set in sleeve would work.

Dimensions

The diagram shows dimensions for my cardigan. My size is about 14.

Gauge used was 30 stitches and 42 rows per 4 inches.

Length was $30 \times 7 = 210$ - clearly impossible on standard gauge, so I tried 200. I find the sideways knitting stretches more than expected in this direction, so it probably was 28 inches.

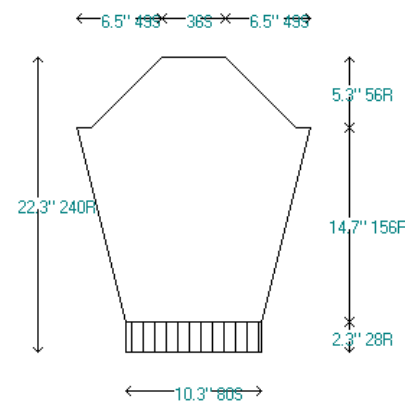
Armhole depth was 9 inches approximately:

So - 8 inches = 60 stitches and I added 6 for the extra inch - it is not exact but works.

Front shoulder needs to be 4 inches = 42 rows

Back needs to be 15 inches roughly = 158 rows

This sleeve schematic is from Knitware. I used an oversized shape.



Pattern

Body - starting from right front

Cast on 200 sts [use waste yarn if desired]

Knit 42 rows stocking stitch.

Knit godet. [see below for instructions]

Shape armhole.

- Cast off 20sts. Knit 2 rows.
- Cast off 20sts. Knit 2 rows
- Knit 26 rows stocking stitch, decreasing 1 sts at armhole each row.
- Knit 4 rows.

Knit godet.

- Knit 4 rows
- Knit 26 rows stocking stitch, increasing 1 sts at armhole each row.
- Cast on 20 sts
- Knit 2 rows
- Cast on 20 sts.
- Knit 2 rows.

Back

Knit godet.

Knit 52 rows stocking stitch

Knit godet.

Knit 54 rows stocking stitch

Knit godet

Knit 52 rows stocking stitch

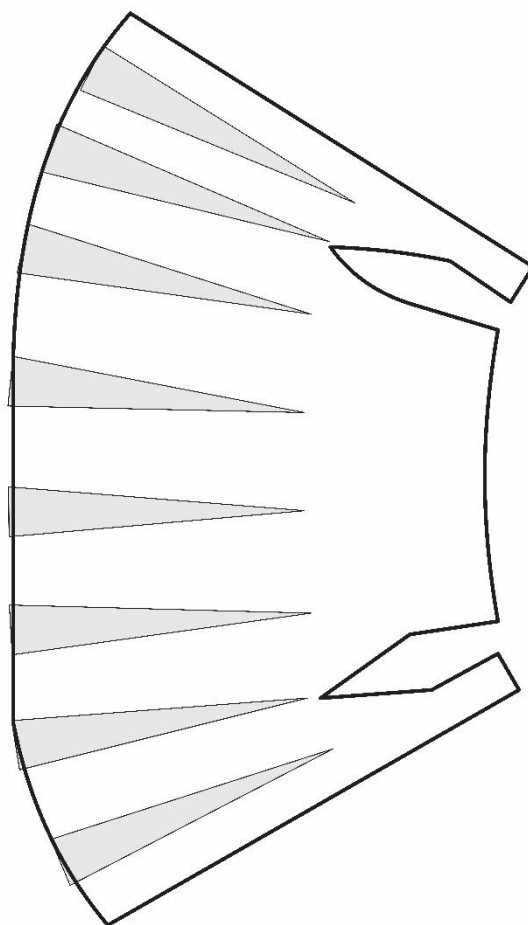
Shape armhole as before

Front

Knit godet

Knit 42rows stocking stitch.

Cast off or remove on waste yarn.



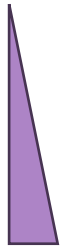
Godet:

The depth of the godet is 130 stitches.

The width depends on the stitch intervals.

The shape of the godet is more important if you use contrasting yarn - you would probably be better using the isosceles triangle shape for that.

Right angled triangle godet



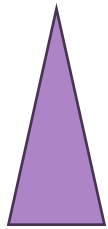
Carriage on left, and set to hold.

With 11 needles at left side in work, put remaining needles in holding position. Knit 1 row, put the needle nearest the carriage into holding position, knit 1 row.

Put 11 more needles in work, knit 1 row, put 1 needle back into hold as before, knit 1 row.

Continue knitting like this until 130 needles are in work. Cancel hold. End of godet

Isosceles triangle godet



1. As for right angled godet, but use 19 needles in work each time, and put 1 back into hold as before, until 126 stitches are in work

2. Carriage on left. Put 17 needles at right side into hold, knit 1 row, put 1 needle into hold. Repeat until all needles in hold. Cancel hold. End of godet.

Sleeves

1. Cast on 80 sts in MY, using TD8, Stocking stitch and closed edge method.
2. Inc 1 st at each end of every 6th row 15 times, then every 7th row 12 times to 134 sts (174 rows total).
3. Work even to total 180 rows. COR.
4. Shape cap. Cast off 8 sts at beg of next two rows (118 sts rem). Dec 1 st at each end of every row 14 times, then dec 1 st at each end of every 2nd row 13 times, then dec 1 st at each end of every row 14 times. Total 236 rows. COR. Cast off remaining 36 sts loosely.

Finishing off

You will now have the shape indicated in the schematic, and two sleeves.

Join the shoulders.

I would join the sleeve seams, then pick up stitches round the sleeve head on a circular needle, pick up an equal number of stitches from the armhole on another circular needle, then cast off the stitches together to join the seam. Alternatively you can mattress stitch the sleeves to the body.

To finish the edge I would use crochet, dc round the knitted edges, then two or three rows of half trebles or dc. But two rows of I cord might be good also.

NB there is considerable curl on the front edges. I found this acceptable after crochet calmed it down a bit, but it is worth considering if you do not like it.

Brand Iron scarf

Lace border

Cast on 10 stitches.

Row 1 (WS): K10.

Row 2: K1 tbl, k1, yo, k2tog, yo, k2tog, yo, k2tog, yo, k1, sl1 wyib (11 sts).

Row 3: K2tog tbl, yo, k8, sl1 wyib.

Row 4: K1 tbl, k1, yo, k2tog, yo, k2tog, yo, k1, k2tog, yo, k1, sl1 wyib (12 sts).

Row 5: K2tog tbl, yo, k9, sl1 wyib.

Row 6: K1 tbl, k1, yo, k2tog, yo, k2tog, yo, k2, k2tog, yo, k1, sl1 wyib (13 sts).

Row 7: K2tog tbl, yo, k10, sl1 wyib.

Row 8: K1 tbl, k1, yo, k2tog, yo, k2tog, yo, k3, k2tog, yo, k1, sl1 wyib (14 sts).

Row 9: K2tog tbl, yo, k11, sl1 wyib.

Row 10: K1 tbl, k1, yo, k2tog, yo, k2tog, yo, k4, k2tog, yo, k1, sl1 wyib (15 sts).

Row 11: K2tog tbl, yo, k12, sl1 wyib.

Row 12: K1 tbl, k1, yo, k2tog, yo, k2tog, yo, k5, k2tog, yo, k1, sl1 wyib (16 sts).

Row 13: K2tog tbl, yo, k13, sl1 wyib.

Row 14: K1 tbl, k1, yo, k2tog, yo, k2tog, yo, k6, k2tog, yo, k1, sl1 wyib (17 sts).

Row 15: K2tog tbl, yo, k14, sl1 wyib.

Row 16: K1 tbl, k1, yo, k2tog, yo, k2tog, yo, k7, k2tog, yo, k1, sl1 wyib (18 sts).

Row 17: K2tog tbl, yo, k15, sl1 wyib.

Row 18: K1 tbl, k1, yo, k2tog, yo, k2tog, yo, k8, k2tog, yo, k1, sl1 wyib (19 sts).

Row 19: K2tog tbl, yo, k16, sl1 wyib.

Row 20: K1 tbl, k1, yo, k2tog, yo, k2tog, yo, k9, k2tog, yo, k1, sl1 wyib (20 sts).

Row 21: K2tog tbl, yo, k17, sl1 wyib.

Row 22: BO 10 sts, k5, k2tog, yo, k1, sl1 wyib (10 sts).

Repeat these rows until your scarf is the length you want it to be.

On the final row 22, cast off all stitches, keeping the final stitch as the beginning of the pickup row.

Top Section

Pick up and knit stitches along the scarf.

Mark the centre of the row.

Short row section:

Knit back to 5 stitches past the centre. Turn and knit to 5 stitches past the centre.

****Continue to turn and knit to last stitch of previous short row and knit the last stitch and the next one together. Then knit 5 more stitches. ** Repeat from ** to ** until all stitches have been knitted.**

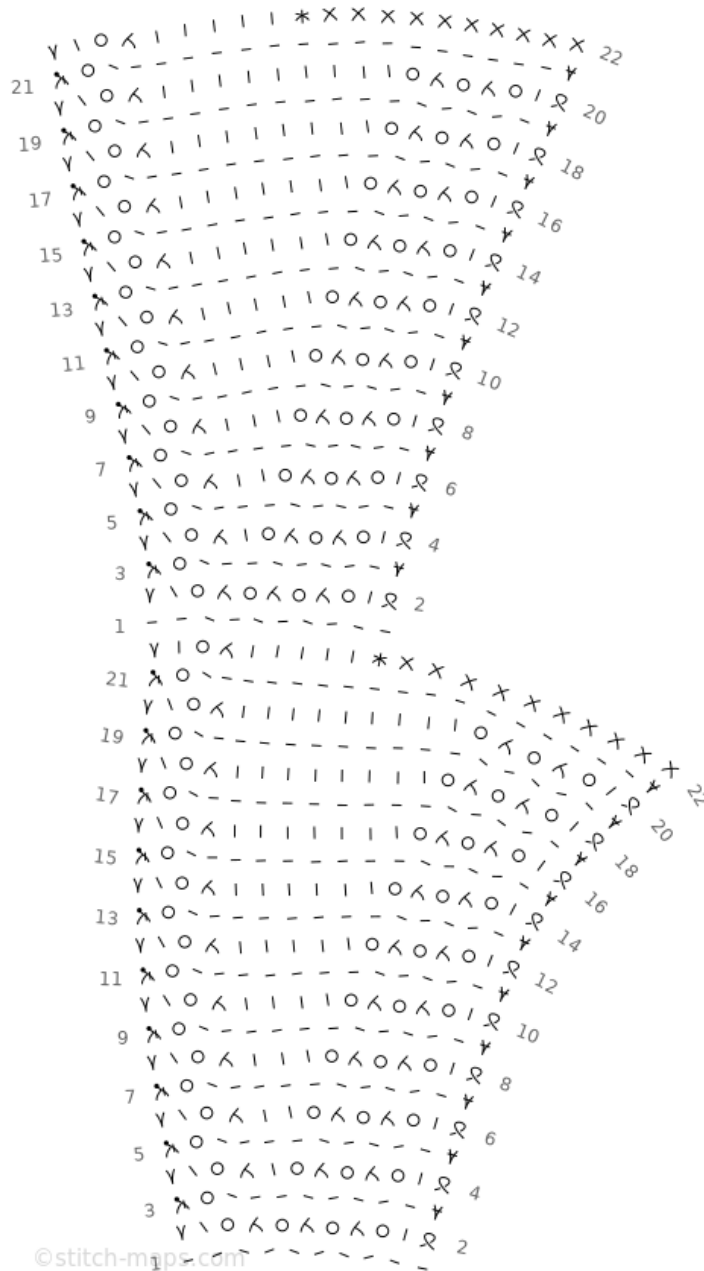
Cast off loosely.

Alternative choices

- Use different yarn - any yarn is suitable, but you need to knit loosely - e.g. 4-5mm needle for 4 ply, 5-6mm for DK [4ply shown left, DK on right]
- Knit smaller segments on lace border: e.g. knit to row 12 before casting off back to 10 sts. [as in picture on left below]
- Knit wider or narrower top section: knit fewer or more than 5 stitch intervals in short rows.



Schematic for
lace border [2
segments
illustrated]



KEY

- | Knit on RS, purl on WS
- Purl on RS, knit on WS
- ⌞ K1 tbl on RS, p1 tbl

on WS

- Y Sl1 wyib on RS, sl1 wyif on WS
- Y Sl1 wyif on RS, sl1 wyib on WS
- ⌞ K2tog on RS, p2tog on WS
- Yo on RS and on WS